



ORAGEUSE

contemporary patterns

AU16 - INDIAN SUMMER

COPENHAGUE JUMPSUIT

ASSEMBLY DIRECTIONS

WWW.ORAGEUSE.COM

© ORAGEUSE 2016 - registered brand and design - For private use only, any commercial use is strictly prohibited

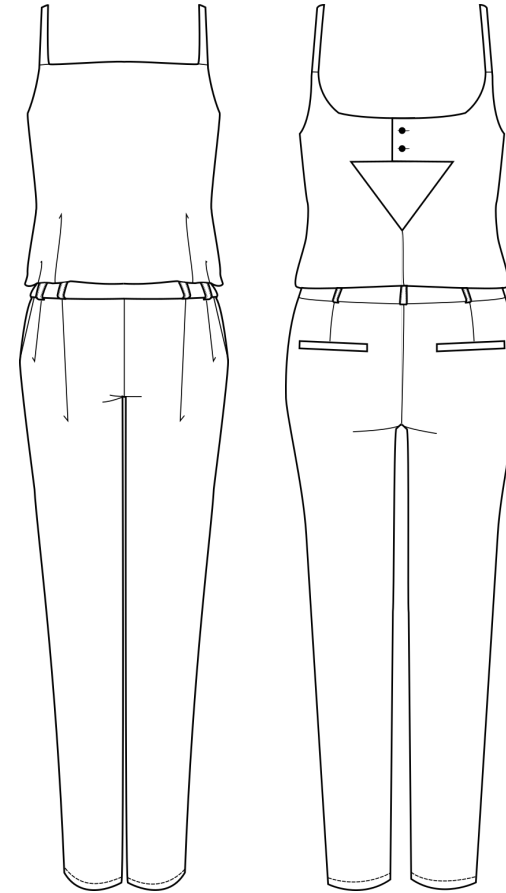


COPENHAGUE

sewing skills: 3/5

Copenhagen is a fitted jumpsuit, with chino-inspired trousers (front pleats, side pockets and piped pockets at the back). The top has thin shoulder straps, a straight neckline and is bloused above the waistband. The front pleats match those of the trousers and the belt loops. The back of the top has a triangular opening under a horizontal buttoned placket. The jumpsuit is closed with an invisible side zipper.

Tricky steps: assembling the waistband, the piped pockets and sewing the invisible zipper. Apart from that, Copenhagen is rather easy to sew, since it has no fly.



For more details about the level of difficulty and sewing skill required for Orageuse sewing patterns, see the dedicated page on our website www.orageuse.com

BASICS

PRELIMINARY RECOMMENDATIONS **4**

SUPPLIES **5**

Shopping list	5
Suggested fabric	5

SIZES & MEASUREMENTS **5**

CUTTING **6**

DIRECTIONS **7**

Assembling the upper part	7
Preparing front part of trousers	9
Back pockets	9
Sewing the pants	11
Assembling the waistband	12
Sewing the invisible zipper	15
Finishing	16

ADDITIONAL INFORMATION

ZIP FILE CONTENTS **17**

INDEX OF PATTERN PIECES **17**

PRINTING & ASSEMBLING **18**

ADAPT TO YOUR MEASUREMENTS **19**

Height and leg length	19
Between two sizes	20

PRELIMINARY RECOMMENDATIONS

WASH AND IRON YOUR FABRIC

Even if you are looking forward to starting, washing your fabric before sewing is never a waste of time. A lot of fabrics may shrink after the first wash ; it would be a pity if you found out once your design has been completely made! Carefully ironing the fabric before you cut it also allows a more precise and symmetrical cut.

CHECK YOUR MEASUREMENTS

This step is absolutely essential: all ready-to-wear labels use their own measurement chart, and the differences can be huge between two brands! Ask for help to be able to take precise measurements. Resources can be found on our website to help you place the tape measure correctly.

LOOK THROUGH ALL THE ASSEMBLY INSTRUCTIONS

Make sure you understand the different steps: a global overview will help you to go faster and to customize the sewing steps more easily in line with your habits and skill. Technical information and a sewing glossary are available on our website at www.orangeuse.com.

GATHER YOUR EQUIPMENT

In addition to the supplies listed on the next page, you will need pins, needles for hand-stitching, good scissors, tailor's chalk or some other marking tool (specific pencil, carbon paper and tracing wheel etc) to transfer pattern markers onto your fabric. If you plan to make some size adjustments on the pattern itself, make sure you have a long ruler (50 or 100 cm) and a French curve.

THINK ABOUT THE FINISHING TOUCHES

Before you start sewing, look at the edges of your fabric. If they fray, you will have to finish the raw edges of every piece before assembling them. If you don't, seams might give way after the finished garment has been worn a few times. To do this, you can oversew the edges with a serger or use a zig-zag stitch in the seam allowances. You might also French seam the edges for a perfect inside finish.

PAY ATTENTION TO GRAINLINE WHILE CUTTING YOUR FABRIC!

Every pattern piece shows a grainline arrow that you have to place parallel to the selvage of the fabric while cutting.

PIN AND BASTE

Pin the fabric pieces together before sewing, perpendicular to the seam line. Be careful when there is some give (always mentioned on the pattern): we recommend that you baste the seam to distribute the give. Using your sewing machine after that will be easier and more accurate.

IRON EVERY SEAM

There is nothing like ironing every seam right after you have sewn them. That guarantees a neat and more professional-looking finish. Open or flatten the seam allowances in line with the directions given in the instructions on the following pages.



SUPPLIES

SHOPPING LIST

- Fabric: 140cm/55" wide x 260cm/3 yds (2 ¼ yds are enough for sizes 34 to 38)
- Lining: 40cm/16" wide x 30cm/12" (if your fabric is thick, you may want to cut the inside part of the top in lining too, that is to say one front (piece number 1) and two backs (piece number 2).
- Fusible interfacing: 110cm/43.5" wide x 30cm/12"
- 50cm/19.7" long invisible zipper
- Two 1cm/0.4" buttons

SUGGESTED FABRIC

Medium weight soft woven fabric, with little (or no) elasticity. The double-layered top requires a fabric that is not too thick or stiff. Cotton and viscose are safe choices.

If you are taller or shorter than 168cm/66", or if you wish to lengthen/shorten the legs, see the «adapting to your measurements» section which starts on page 18.

SIZES & MEASUREMENTS

FRENCH SIZES	YOUR MEASUREMENTS	S34	S36	S38	S40	S42	S44	S46
Height		168cm / 66"						
Bust		80cm 31.5"	84cm 33"	88cm 34.6"	92cm 36.2"	96cm 37.8"	100cm 39.4"	104cm 40.9"
Waist		62cm 24.4"	66cm 26"	70cm 27.6"	74cm 29.1"	78cm 30.7"	82cm 32.3"	86cm 33.9"
Upper hips		78cm 30.7"	82cm 32.3"	86cm 33.9"	90cm 35.4"	94cm 37"	98cm 38.6"	102cm 40.2"
Hips		86cm 33.9"	90cm 35.4"	94cm 37"	98cm 38.6"	102cm 40.2"	106cm 41.7"	110cm 43.3"
Front shoulder to waist		36cm 14.2"	36.5cm 14.4"	37cm 14.6"	37.5cm 14.8"	38cm 15"	38.5cm 15.2"	39cm 15.4"
Waist to knee		57cm 22.5"	57cm 22.5"	57cm 22.5"	57cm 22.5"	57cm 22.5"	57cm 22.5"	57cm 22.5"
Knee height		47cm 18.5"	47cm 18.5"	47cm 18.5"	47cm 18.5"	47cm 18.5"	47cm 18.5"	47cm 18.5"
Thigh		48cm 18.9"	50cm 19.7"	52cm 20.5"	54cm 21.3"	56cm 22.1"	58cm 22.9"	60cm 23.7"

Copenhagen's trousers are mid-waist (just above the upper hip). Your upper hip measurements are key. You should pick a size that matches your measurements closely as the give is limited in this pattern, especially around upper hips and hips. As a general rule, if you are hesitating between two sizes, **always chose the bigger one**, and final adjustments will then be easier.

Do you need any help to check your measurements? Please go to the dedicated page on our website at www.orageuse.com

CUTTING

Carefully cut every pattern piece according to the size chosen and your own lines of adjustment (if relevant).

Place these pieces on the folded fabric, **all grainline arrows in parallel to the selvage** of the fabric. You might use up more fabric by doing this, but the result will be more beautiful and resistant.

If your fabric is printed with patterns, match these patterns along the future seams, for a perfect finish!

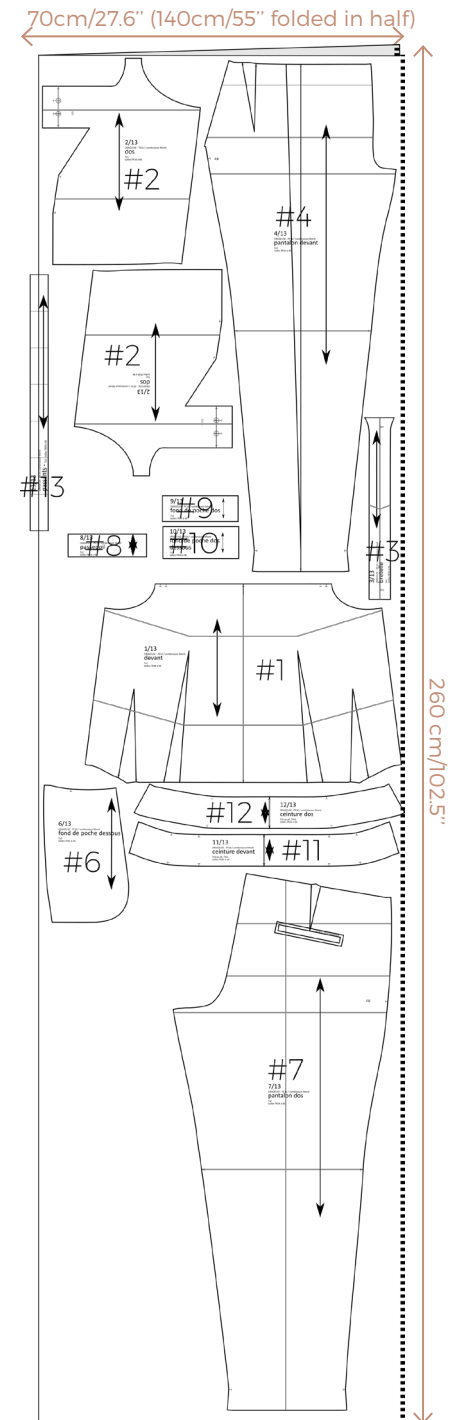
Seam allowance is already included in pattern pieces (1cm/0.4" everywhere, except for the hems at the bottom of the legs (4cm/1.6").

All the pieces are cut twice, except the belt loops (piece number 13) that you have to cut only once, and the top back (piece number 2) that is cut four times.

LINING: Front pocket bag (piece number 5), is cut twice.

FUSIBLE INTERFACING: The bottom of the trouser legs (pieces 4 and 7), location of the back trouser pockets (piece number 7), and waistband parts (11 et 12).

! Copy all the markings from the pattern onto your fabric, especially the notches. Once the fabric has been cut, cut out the notches on a few millimeters in the seam allowances. These notches are essential in order to follow the assembly directions properly!

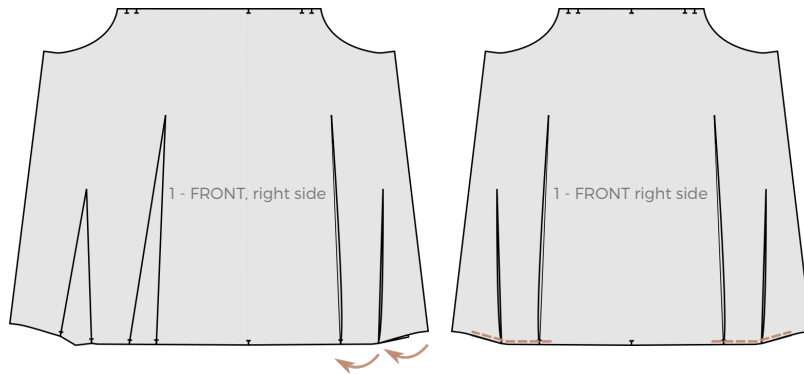


DIRECTIONS

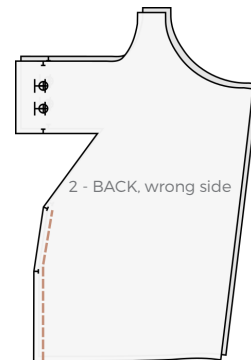


1 ASSEMBLING THE UPPER PART Pieces 1, 2 and 3

Form the front pleats, and stitch in seam allowance to maintain in place.



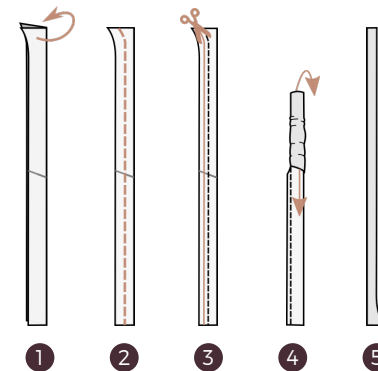
Sew together the two parts of the two identical backs, right sides facing, up to the bottom of the future triangular opening.



Sew each front piece with one back piece, leaving the right side open (to allow the zipper to be put in later)
Be careful: the top of the jumpsuit will have 2 identical sides, one external and one internal which will end up wrong sides facing (as if one was a lining). Therefore you should sew the opposite sides while sewing the fronts and backs together (see below).

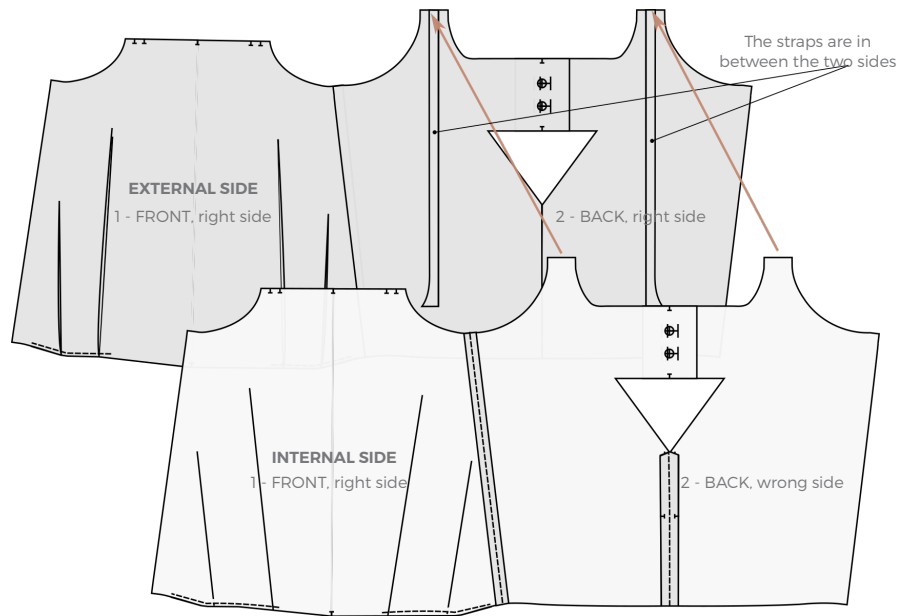


Fold and stitch the two shoulder straps in half. Recut the seam allowance, and turn the straps inside out.

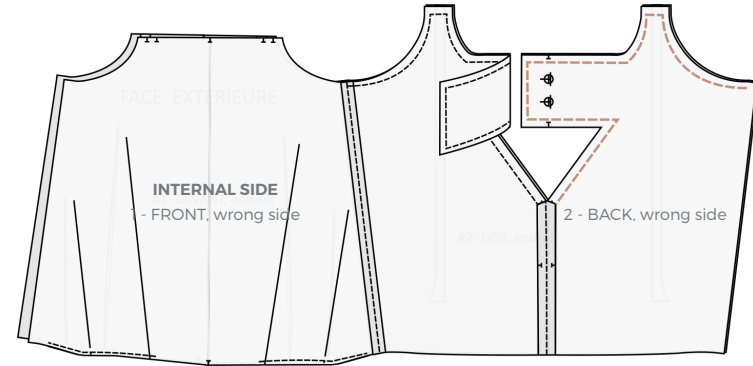
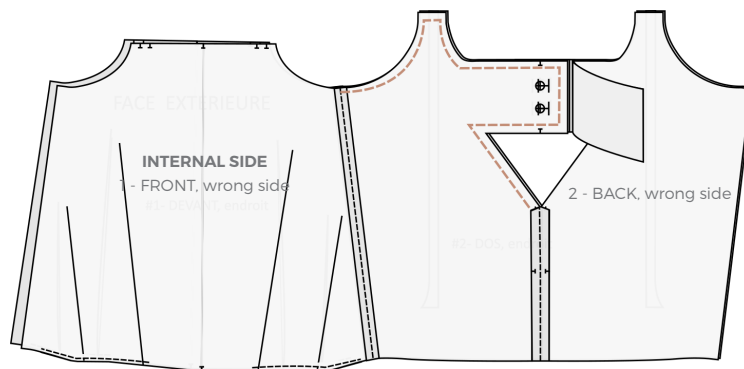


There are several ways to turn a strap or any ribbon inside out: you can use a safety pin, or sew one of the small sides using a thin cord placed inside the tube, that you pull to turn the tube inside out, and that you unpick just afterwards. A specific tool can also be bought at a haberdasher's.

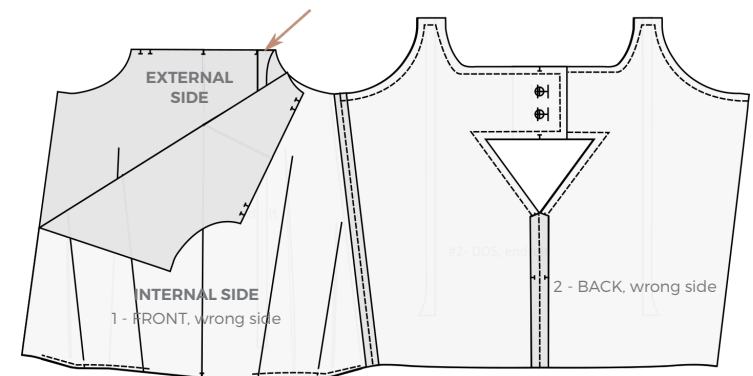
With their right sides facing, stack the two “front/back” groups, with the shoulder straps positioned in between: the external side first, then the shoulder straps, pinned in place on the back, and then the internal side.



Sew the backs together with the straps, from the side seam to the bottom of the triangular opening.



Pin the other side of the shoulder straps to their place at the front, between the internal and external sides.



To pin the second strap, bring the two unsewn sides closer (where the zipper will be) and place the strap the same way as the other one.

Stitch along the armholes and front neckline to assemble the two faces and straps.

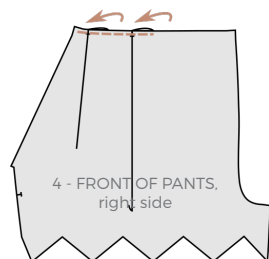
Notch the curves (armholes) and angles of the triangular opening. Cut the angle again where the straps are sewn and around the buttoned placket. Open the seams with your iron, then turn right side out, and make sure your straps are not coiled and that the opening angles are neat. Also check that the two sides of the buttoned placket are the same height. Iron.

Understitching the armholes and necklines provides a better finish.

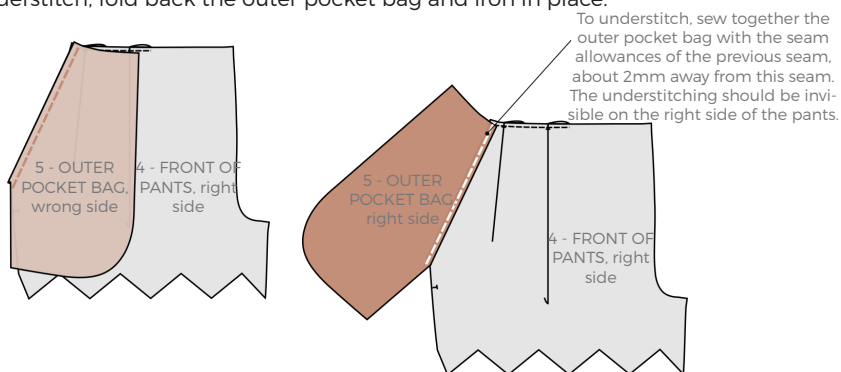
2 PREPARING FRONT PART OF TROUSERS

Pieces 4, 5 and 6

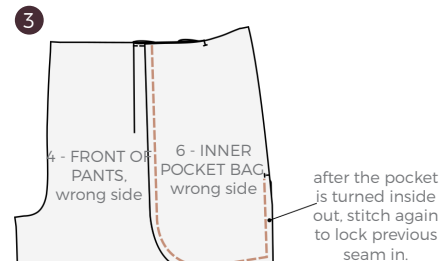
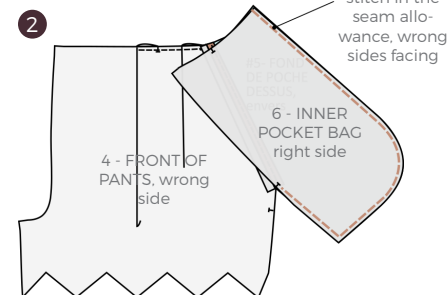
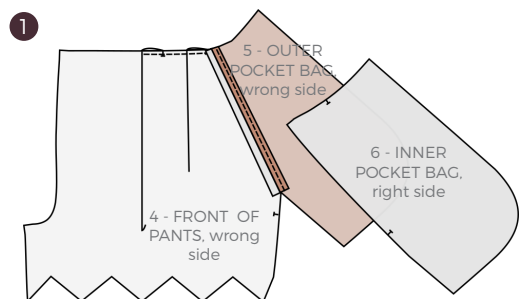
Fuse the bottom of the legs as indicated on the pattern pieces.
Fold the pleats at the top of pieces number 4, then stitch in the seam allowance to keep them folded.



Sew the outer pocket bags with the front of the pants, right sides facing, understitch, fold back the outer pocket bag and iron in place.



French seam the pocket bag for a nice finish inside: first sew both sides inside the seam allowance of the pocket bag, wrong sides facing, then turn the pocket inside out. Stitch the outline of the pocket again, this time 1cm/0.4" away from the edges, to lock the first stitching in.

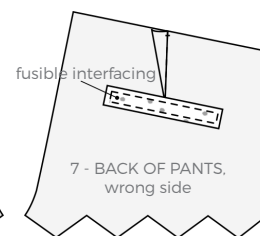
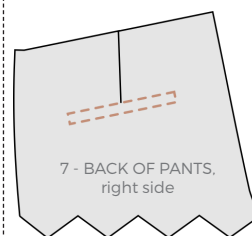
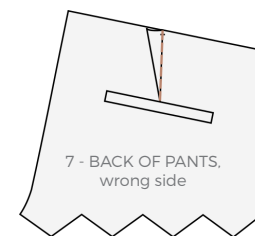


Make a few stitches in the seam allowance to fix the top of the pocket to the front of the pants.

3 BACK POCKETS

Pieces 7, 8, 9 and 10

Fuse the bottom of the back legs of the pants as shown on the sewing pattern. Sew the darts.



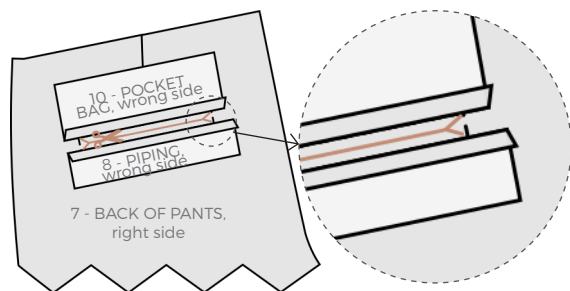
Overcast the contours of the pocket, so you can see them on the right side of fabric.

On the wrong side, fuse interfacing on the pocket's location, as indicated on the sewing pattern.

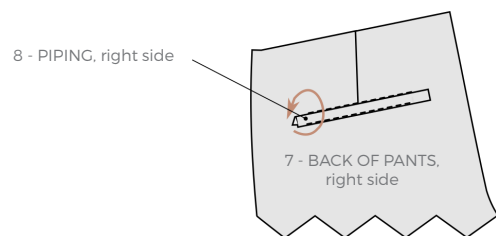
Sew the piping onto the bottom line of the overcast, right sides facing. Sew the pocket bag (number 10) with back pants on the upper line of the overcast, right sides facing.



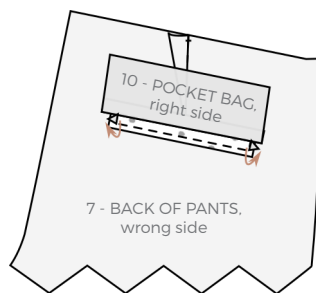
Fold the seam allowance towards the piping, and fold the pocket bag as well to reveal the final location of the pocket. Cut a slit in the middle, forming two little triangles at the sides. Be careful to cut only the back pants and not the piping or the pocket bag.



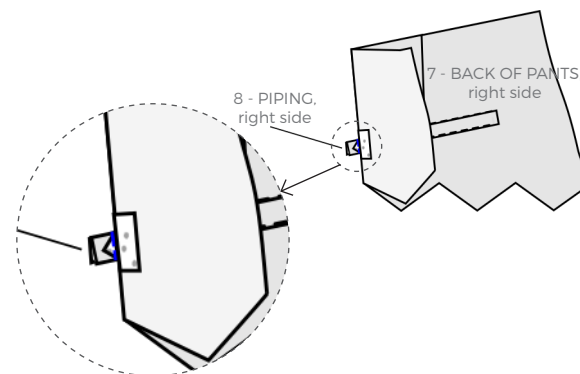
Flip the pocket bag through the slit and iron the seam allowances to the top. On the right side of the pants, fold the piping over the slit. Fold the piping again, back on itself, so that this pleat lines up precisely along the top of the slit, along the seam that attaches the pocket bag to the pants. Iron to fasten the pleat.



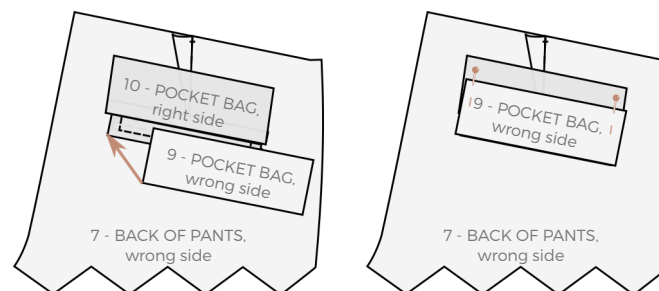
Slip the small edges of the piping through the slit. Slip the triangles that were cut when the slit was opened through in the same way. The angles of the opening should be right-angled. If they are not, carefully recut the triangle edges.



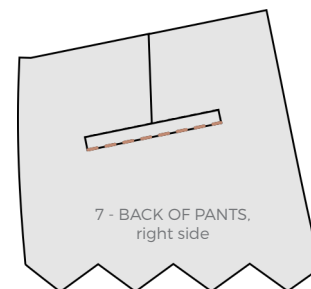
On the wrong side of the pants legs, sew these triangles with piping only (not with back of the pants or pocket bags).



Pin the second part of the pocket bag (number 9), placing the bottom along the bottom of the piping.



On the right side of the pants, sew this pocket bag into place by stitching exactly along the existing piping stitch, so this new seam remains invisible.



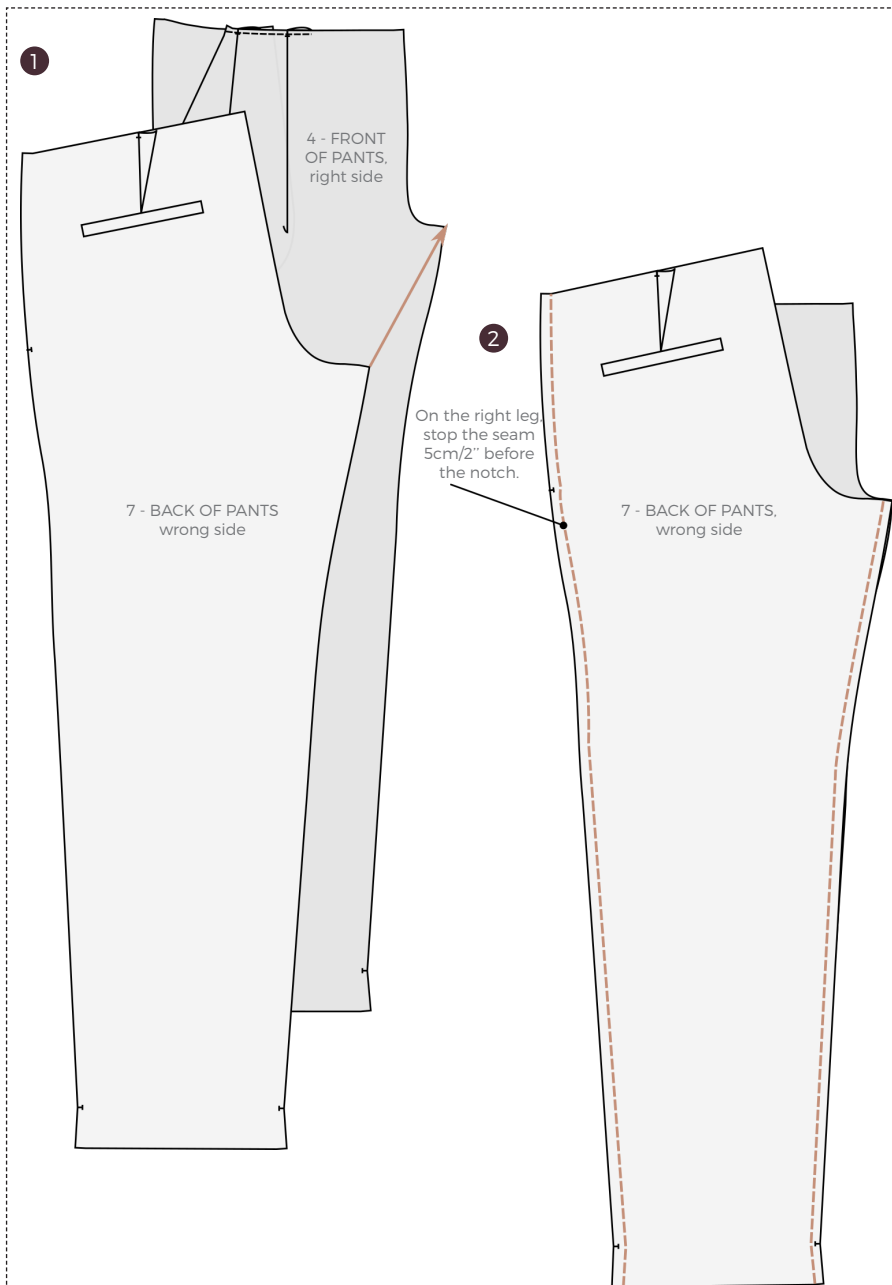
On the wrong side of the pants, place the two parts of the pocket bag one on top of the other and sew them together.

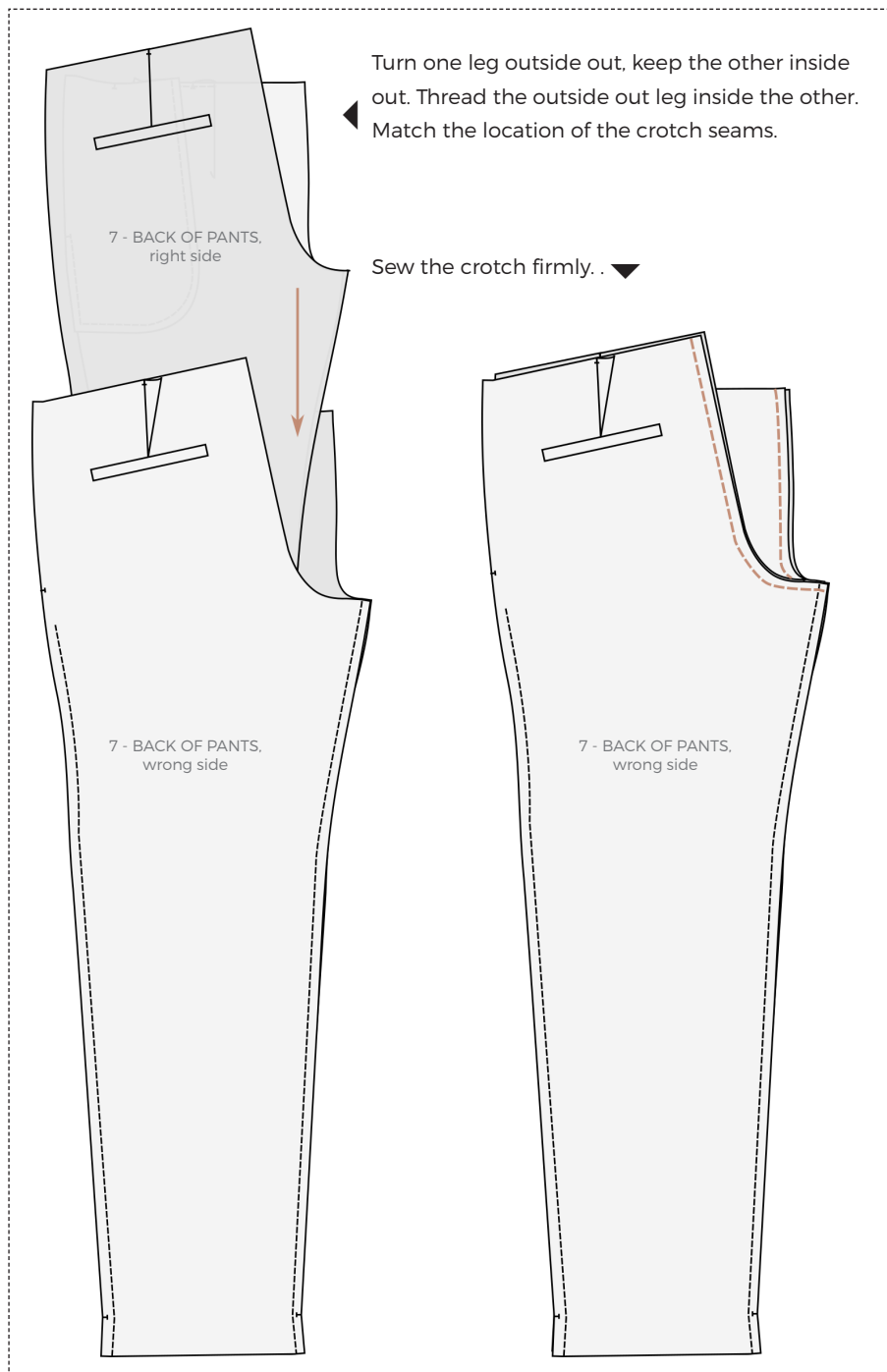


4 SEWING THE PANTS

Pieces 4 and 7

Sew the pant legs, one front with one back. On the right leg, stop the seam 5cm/2" before the notch that indicates the end of the zipper. ▶



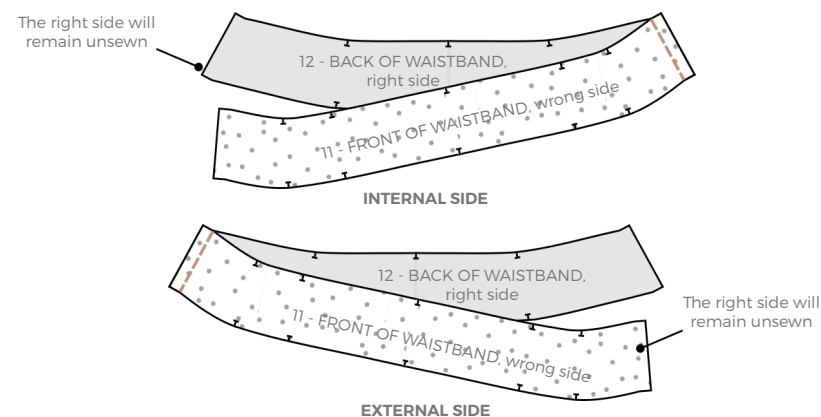


5 ASSEMBLING THE WAISTBAND

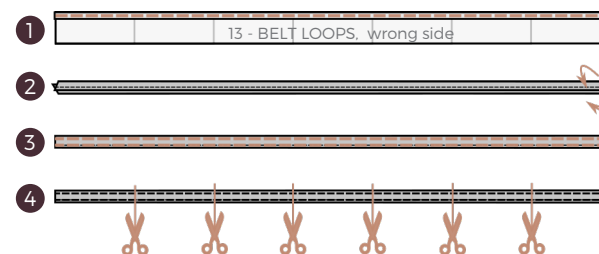
Pieces 11, 12 and 13

Fuse the wrong side of the waistband pieces.

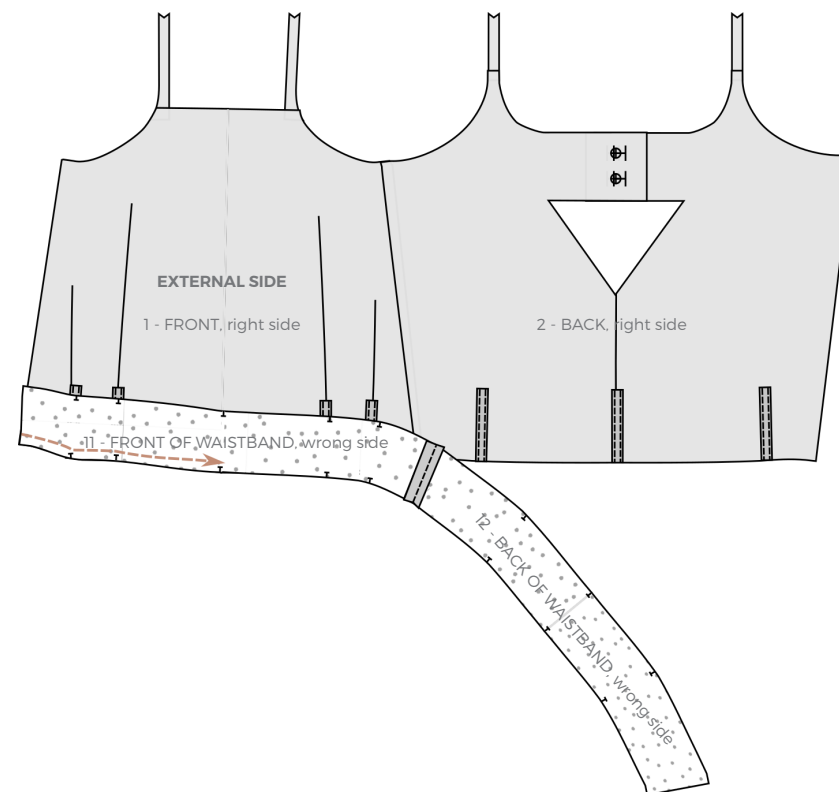
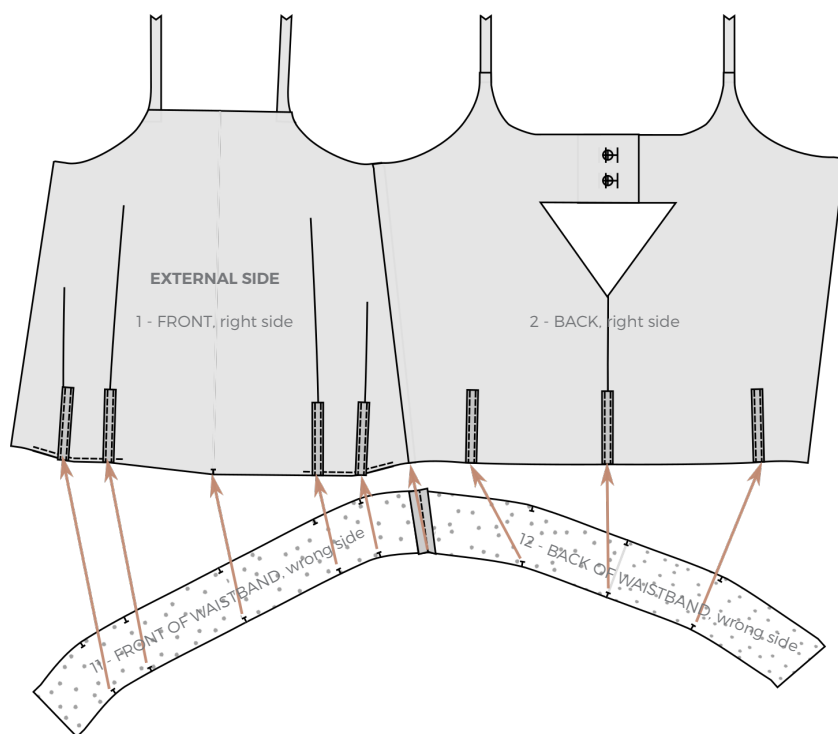
Sew together the front and back waistbands on one side. The right side of the final waistband will remain open for the putting in the zipper. As concerns the top of the jumpsuit, be careful with the external and internal sides.



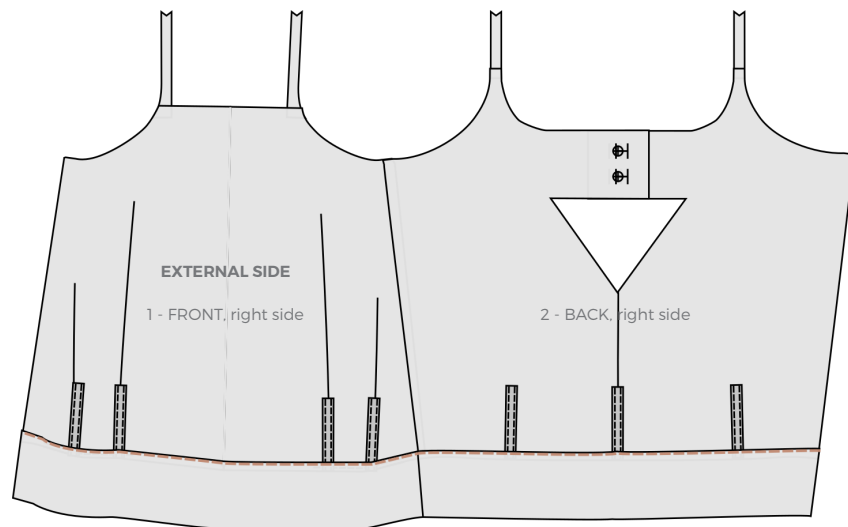
Prepare the belt loops: hem (5mm/0.2") on the longest edge of piece number 13. Fold the belt loops piece into three, putting the hem outside. Stitch the two long edges, then cut seven equal belt loops.



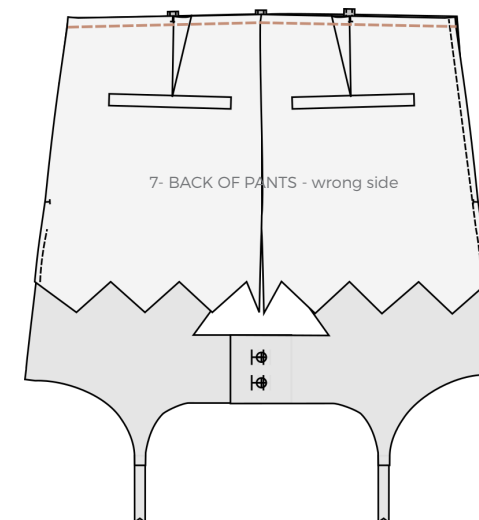
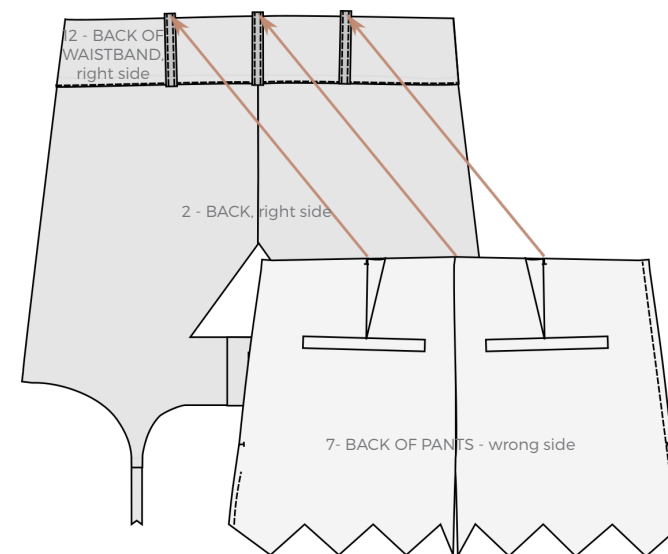
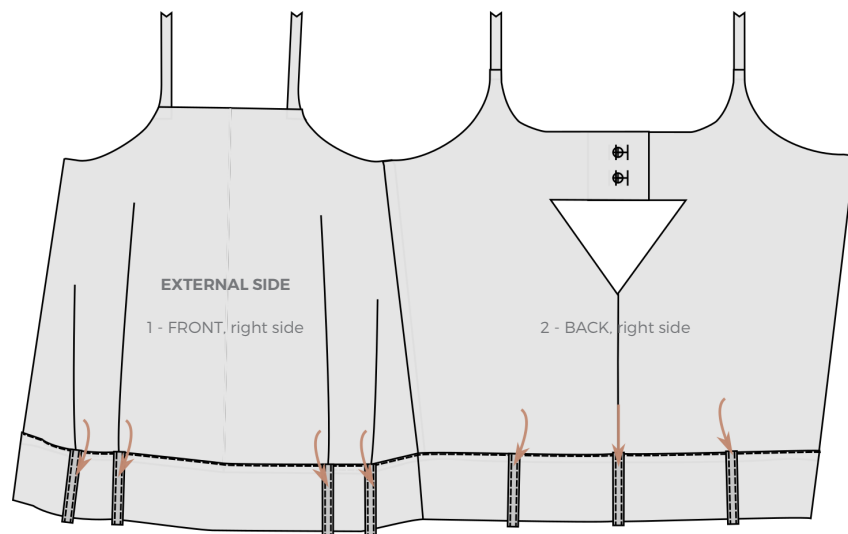
Pin the belt loops in line with the pleats, facing the waistband notches. Sew the external side of the waistband over the belt loops, right sides facing with the upper part of the jumpsuit (external face too).



Assemble the internal side of the waistband with the internal side of the top, right sides facing. On the right side of the garment, stitch in the existing seam to attach the two sides of the waistband together.

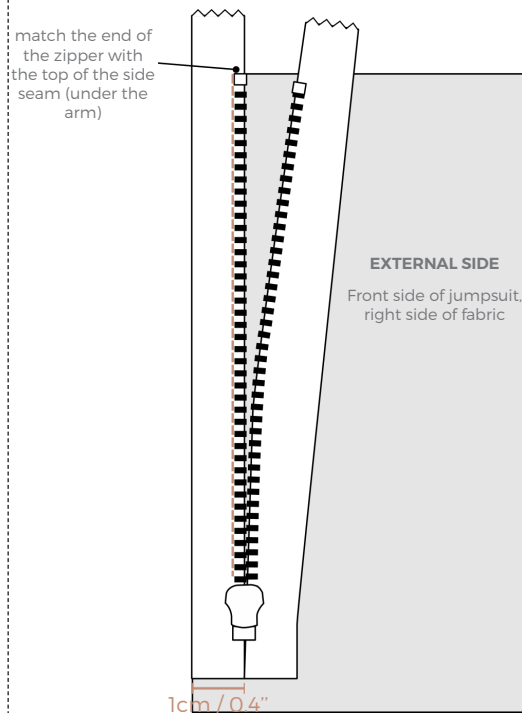


Flip the belt loops down, and pin them to the trousers and the external side of the waistband (leaving the internal side alone). Sew all around the waistband.



Finish the waistband by sewing the internal side to the external side: fold the seam allowance between the two sides and stitch onto the right side of the garment in the existing seam. In order to prepare the installation of the zipper (step 6 in the following pages), stop the seam 2cm/0.8" away before the two edges of the side. From this point, sew together only the internal side of garment with the internal waistband.

6 SEWING THE INVISIBLE ZIPPER



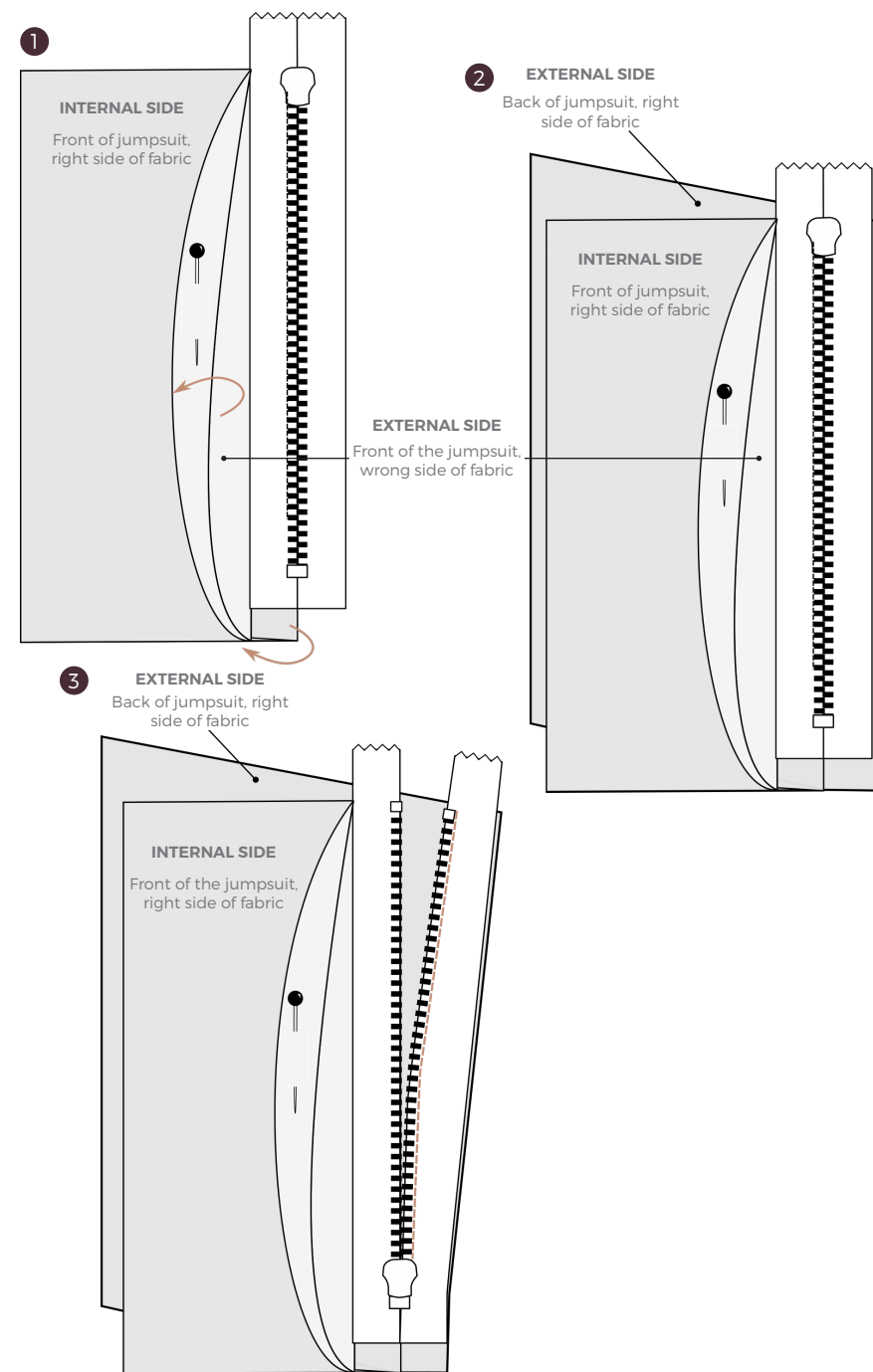
Two steps are required to install the zipper: it will first be sewn on the external side of the jumpsuit, then the internal side will be dealt with.

1- Sewing the zipper with the external face

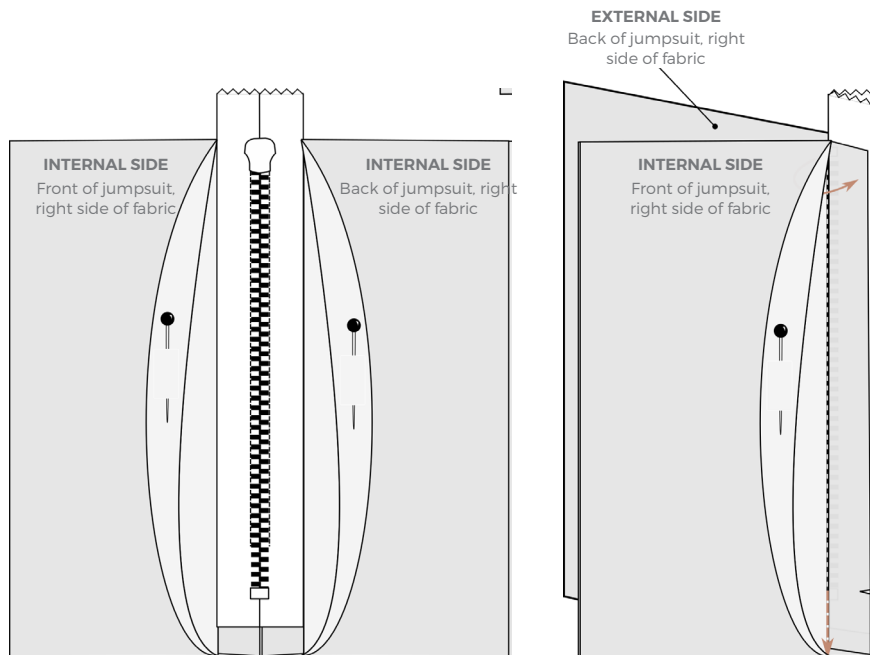
Pull the zipper right down and flatten the connexion between the ribbon and the zipper itself. Place the open zipper right sides facing on the jumpsuit, the metallic part at 1cm/0.4" from the edge of the fabric (the ribbon is often 1cm/0.4" wide, and, if so, its edge will match the edge of the fabric). Pin the zipper into place.

Sew the zipper with the external side of the jumpsuit only, as close as you can to the metallic part of the zipper, up to the notch that indicates the end of the zipper (on the leg). If you use a special presser foot, the zipper will position itself in the hollow on the right of the sewing machine needle.

Close the zipper, pin the other side of the ribbon with its right side facing the other edge of the opening. Open the zipper, and sew as close as you can to the zipper up to the ending notch. ►

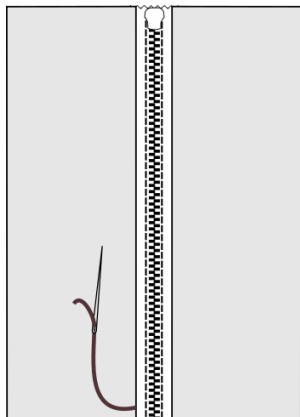


Close the zipper and end the seam below the zipper, starting the seam as close as possible to the end of the zipper.



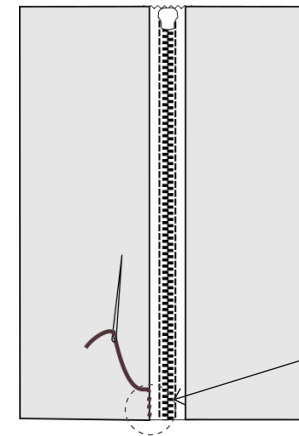
2- Close the internal side

Recut the upper part of the zipper's ribbon, and fold the seam allowance of the internal face between the two faces, covering the ribbon on both sides of the zipper. .

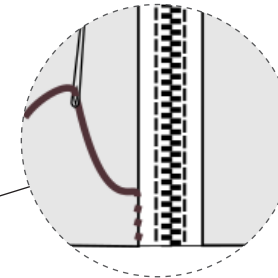


Handstitch the edges of this pleat with the zipper's ribbon, (leaving apart the external side of the garment).

◀ Start in between the two sides, stitching in the fold to see the needle on the right side of the internal side of the garment.



Stitch very close to this point to go through the zipper's ribbon, then go out again very close to the fold line, 0.5cm/0.2" away, and continue the same way on both sides of the zipper.



7 FINISHING

You only have to sew the back buttons and create buttonholes. Remember that on a ladies' garment, buttons are located on the left side of the body, whereas buttonholes are placed on the right side of the body. For a man's garment. Hem the pants legs (the notches are placed 4cm/1.6" high).

Well done, that's it!

Fond of your new Copenhagen jumpsuit? Show it on Instagram with the hashtag #orangeuseCopenhagen! You can also send us a link to your blog or on Pinterest via contact@orangeuse.com and appear on our Pinterest board of finest realizations!

additional information

ZIP FILE CONTENTS

NAME OF DOCUMENT	CONTENTS	LANGUAGE
ORGS-AU16-Copenhagen-instructionsFR	Instructions leaflet	French
ORGS-AU16-Copenhagen-instructionsENG	Instructions leaflet	English
ORGS-AU16-Copenhagen-A0	A0 pattern (Copy-shop version)	Bilingual (french and english)
ORGS-AU16-Copenhagen-A4	A4 pattern	Bilingual (french and english)
ORGS-AU16-Copenhagen-USletter	US letter pattern	Bilingual (french and english)

INDEX OF PATTERN PIECES

Seam allowances are included, you do not have to add them when cutting your fabric. Seam allowances are 1cm/0.4" everywhere, except for the hems (front and back of the trousers), where they are 4cm/1.6" and marked with notches.

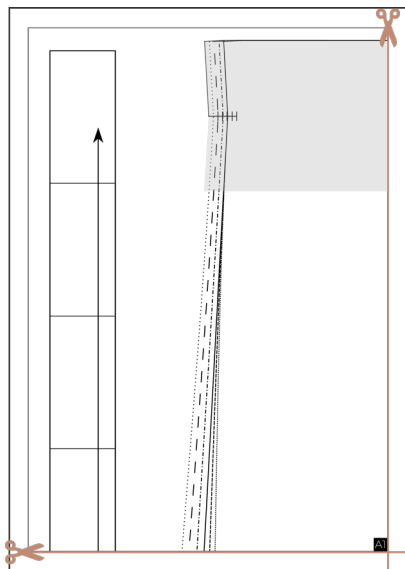
NUMBER	NAME	CUT DIRECTIONS
1/13	Front of top	Fabric x 2
2/13	Back of top	Fabric x 4
3/13	Shoulder strap	Fabric x 2
4/13	Front of pants	Fabric x 2, fusible interfacing (at the bottom of legs, see pattern)x2
5/13	Outer pocket bag	Lining x 2
6/13	Inner pocket bag	Fabric x 2
7/13	Back of pants	Fabric x 2, fusible interfacing (at the bottom of legs and on pockets location, see pattern)x2
8/13	Piping	Fabric x 2
9/13	Back pocket outer pocket bag	Fabric x 2
10/13	Back pocket inner pocket bag	Fabric x 2
11/13	Front of waistband	Fabric x 2, fusible interfacing x 2
12/13	Back of waistband	Fabric x 2, fusible interfacing x 2
13/13	Belt loops	Fabric x 1

PRINTING & ASSEMBLING

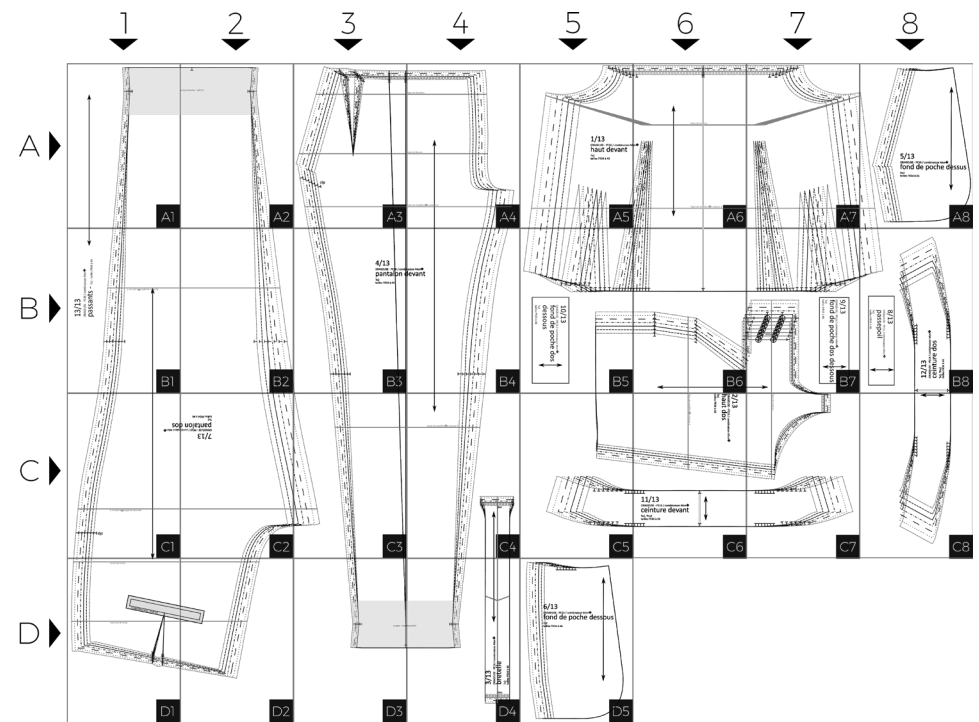
Every Orageuse pattern gives you the choice between printing at home (A4 or US letter papersizes) or at a printer's or a copyshop. This last option means you will not waste time cutting out and pasting the multiple sheets of the printed pattern

If you print at home:

- Open the pdf file, and make sure «real size» or «100%» option is selected before you print.
- The A1 page of the pattern file contains a 4cm/1.6"x4cm/1.6" square. Print this page only, and measure the square to confirm your printer's settings.
- Cut out the right and bottom borders of every sheet, following the frame line.



You can then tape the whole pattern this way:



ADAPT TO YOUR MEASUREMENTS

Do not compare your measurements directly to the pattern pieces: they have to be different, mostly because of the give that is added for you to be able to move once wearing the garment!

To make these types of adjustments, you will need a long ruler (50 or 100cm) and a French curve.

HEIGHT AND LEG LENGTH

Our patterns are designed for a 168cm/ 66" standard height. In order to extend or shorten the height of the pattern, one can not simply add more fabric at the ends ; that would change the shape and proportions of the garment.

First, see where the height differences are located in your body, by comparing your measurements with the chart on page 5. See the «front shoulder to waist», the «waist to knee» and «knee height» measurements in particular.

On pieces number 1 (front of top), 2 (back of top), 4 (front of pants) and 7 (back of pants) of the pattern, three lines are marked «height modifying line 1/2/3». They will allow you to increase or decrease the overall height of the garment.

How do I proceed ?

For example: your size is 40, your front waist to knee measurement is 3cm/1.2" longer than the corresponding measurement in the reference chart.

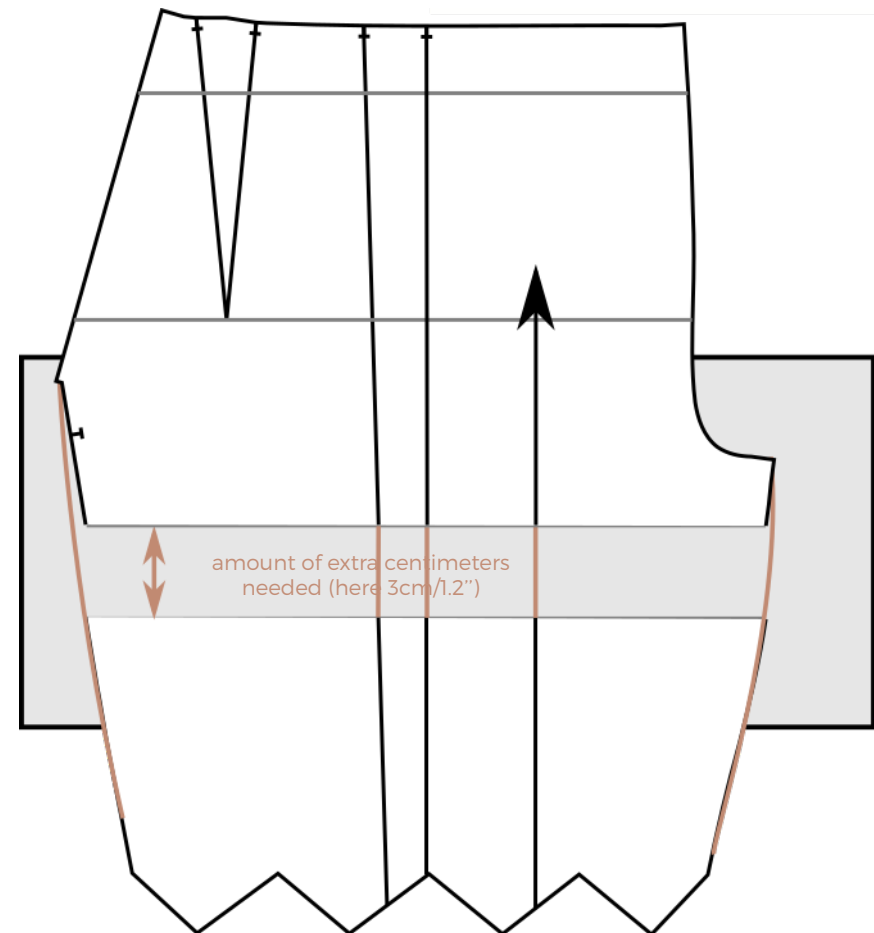
Cut only pieces 4 (front pants) and 7 (back pants) following the height modifying line number 2. Paste a piece of paper at the back of these pieces: this piece of paper must be the same width as the pattern pieces, and its height is the number of centimeters

you want to add (in our example, 3cm/1.2") plus some extra space to apply the glue or tape).

Draw a new line parallel to the «height modifying line» 3cm/1.2" (or whatever your need is) under this line.

Paste the bottom part of the pattern piece along this new line. Connect the lines on the pattern pieces with a ruler for straight lines and a French curve for curves. Try to respect the original shape of the pattern pieces. That's it!

To remove centimeters, cut along the «height modifying line», draw a new line on the upper pattern part, located above the «height modifying line». Between these two lines are the amount of centimeters you need to remove. Paste the bottom part of the pattern piece on the upper part, along that new line.



BETWEEN TWO SIZES

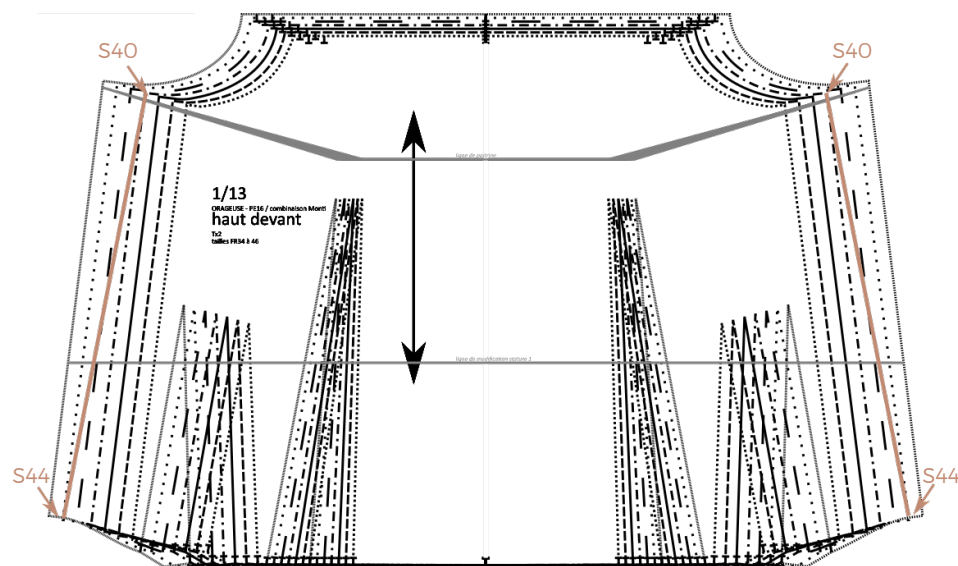
There are three main situations:

Situation 1

Your waist corresponds to a bigger size than your bust. Most of the time when you buy clothes, it fits you around your waist and hips but it is too large at shoulders and bust. For example, let's say that your bust is a size 40 and your hips a size 44. The Copenhagen jumpsuit can be adapted to fit your body shape.

Identify the lines corresponding to sizes 40 and 44 on the pattern pieces. Trace a straight line to link the bottom of the armhole in size 40 to the bottom of the top in size 44. The relevant pleats lines are now a size 44. Do the same on piece number 2 (back of the top).

When you assemble the whole garment, use the shoulder straps in size 40 and the pants and waistband in size 44.



Situation 2

Your bust corresponds to a larger size than your waist does. Proceed in the same way as explained in «situation 1», linking the different sizes on the relevant pattern pieces. Be careful to carry every change over to the corresponding pieces that you will sew together. For example, if you make changes on the top of front (number 1), you have to do the same on back top and check which sizes will match your changes for the waistband and trousers.

Situation 3

Your measurements are exactly in between two sizes, at the bust as well as at your waist or hips.

Place markers on the pattern pieces just between the lines that represent the two sizes you are close to, at the end of bust, waist, upper hips and hips line and at every corner of each piece of the pattern. Use a ruler and a French curve to link those points, trying to draw lines that are similar to the original outlines. Make sure to modify every pattern piece, so that they keep matching together.

If you have any doubts, do not hesitate to measure and compare lines that represent seams that will be sewn together.

