



ORAGEUSE

*c o u t u r e   c o m t e m p o r a i n e*

H/W17 - LES PETITS KITS/LITTLE KITS

## ROME - KIT MANCHES / LONG SLEEVES KIT

Attention : la réalisation d'une chemise ou d'une robe Rome nécessite l'achat du patron correspondant en plus de ce kit.

/

Careful ! To make a Rome dress or shirt, you have to buy the corresponding sewing pattern in addition to this kit.

### **Format/Paper size: US**

Niveau de couture / sewing skill: 3/5

Marges de couture (1cm) incluse / seam allowance (1cm/0.4") included

© ORAGEUSE 2017 - marque et modèle déposés / registered design and trademark  
Toute utilisation commerciale interdite / Non-commercial use only

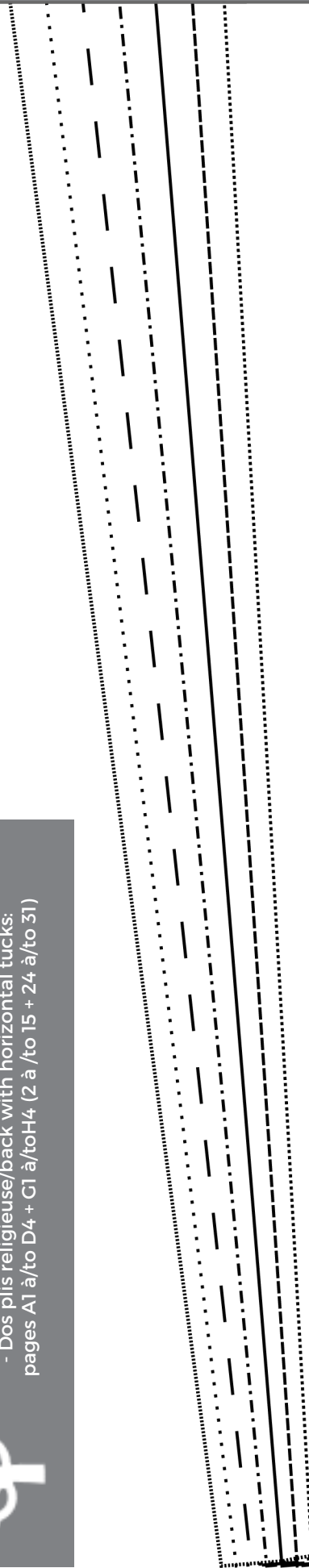
[WWW.ORAGEUSE.COM](http://WWW.ORAGEUSE.COM)



## Économisez du papier, sauvez des arbres !

### Save paper (and trees!)

- Dos pli plat/back with flat pleat: pages A1 à/to F4 (2 à/to 23)
- Dos plis religieuse/back with horizontal tucks: pages A1 à/to D4 + C1 à/to H4 (2 à /to 15 + 24 à/to 31)



Zone de test des  
réglages d'impression  
/ print test zone

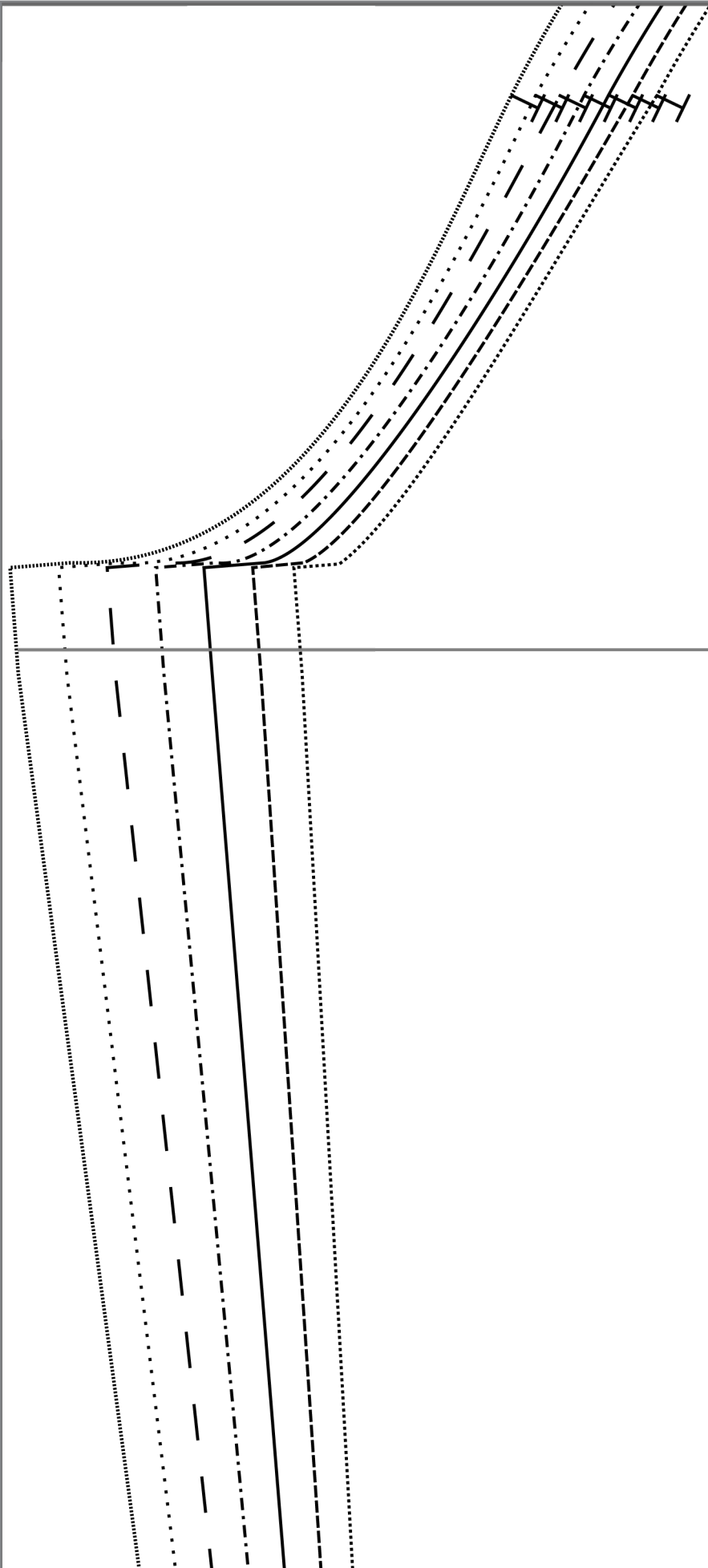
(4cm x 4cm  
1.6" x 1.6")

fente/slit

pli/pleat

#### LÉGENDE/KEY

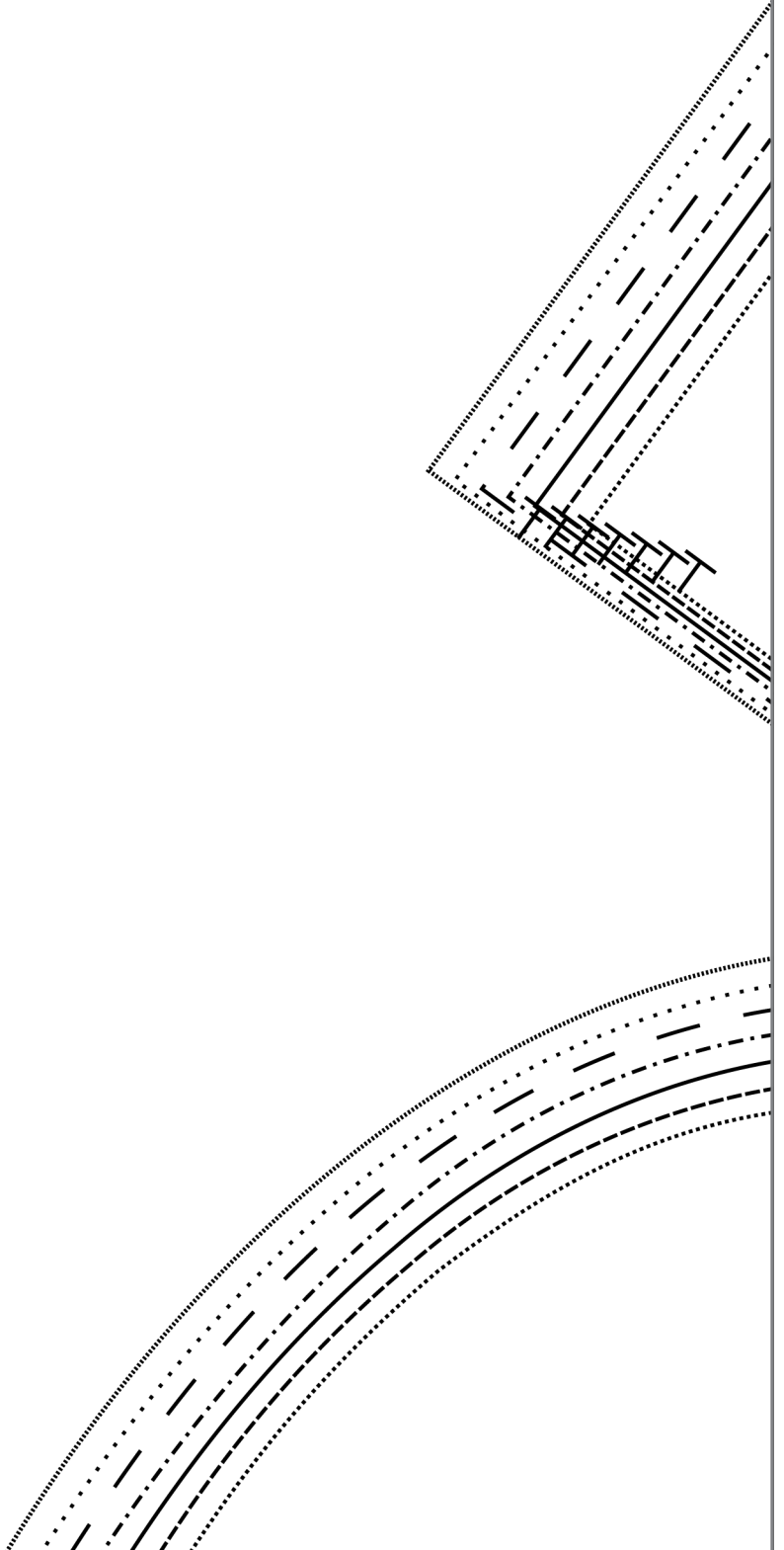
	Droit-fil / grainline
	Couper au pli / cut on fold
	Cran / notch
	Lignes de modifications et de structure / modifying and structure lines
	Repère (assemblage, fente...) / marker (assembly, slit...)
	Bouton / button
	Boutonnière / buttonhole
	Taille/size FR34
	Taille/size FR36
	Taille/size FR38
	Taille/size FR40
	Taille/size FR42
	Taille/size FR44
	Taille/size FR46

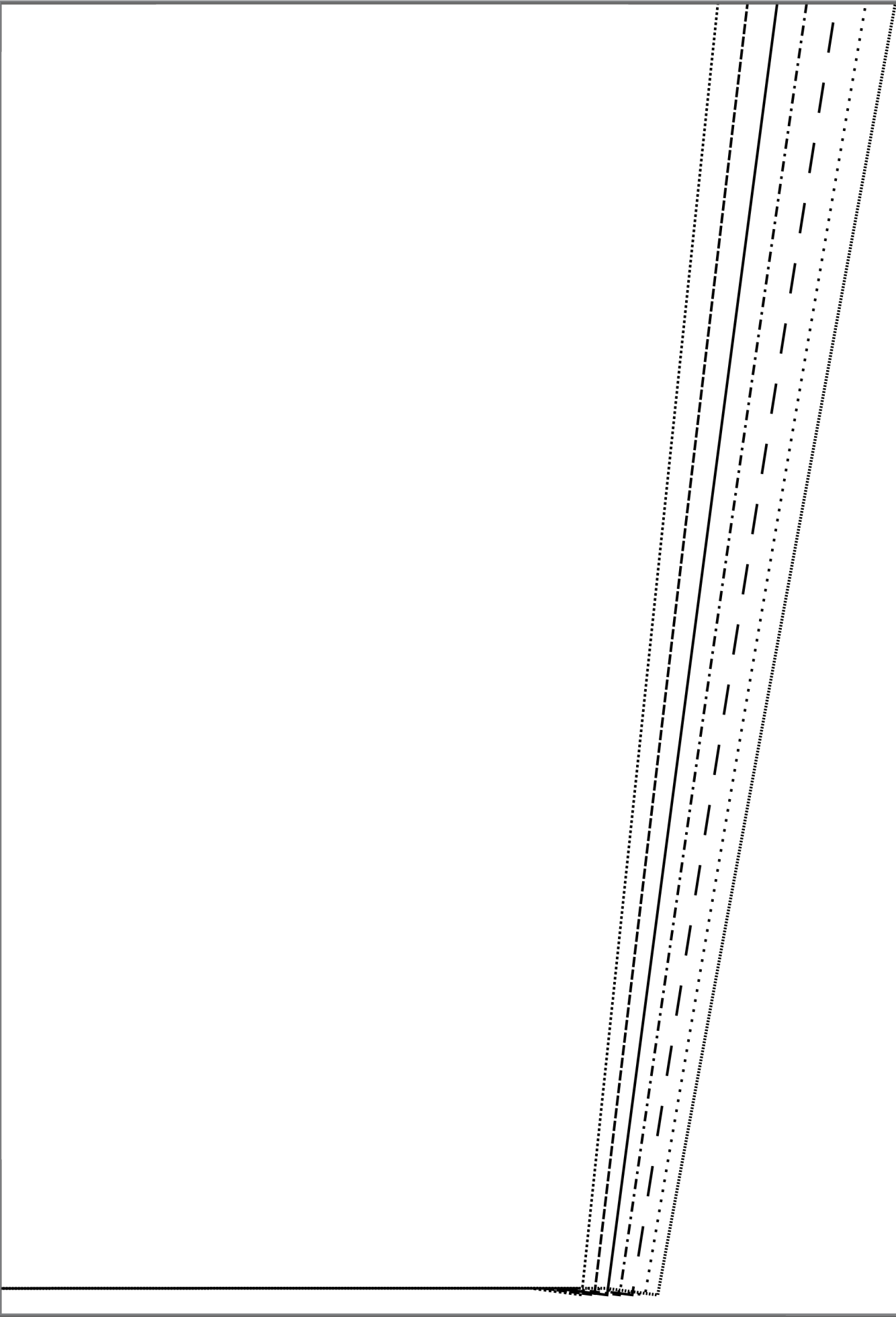


ligne de modification longue

ORAGEUSE - A  
KIT MANCHES L  
MANC

tail  
© 2016 ORAGEUSE - marque €





longueur manche / height modifying line



4/6

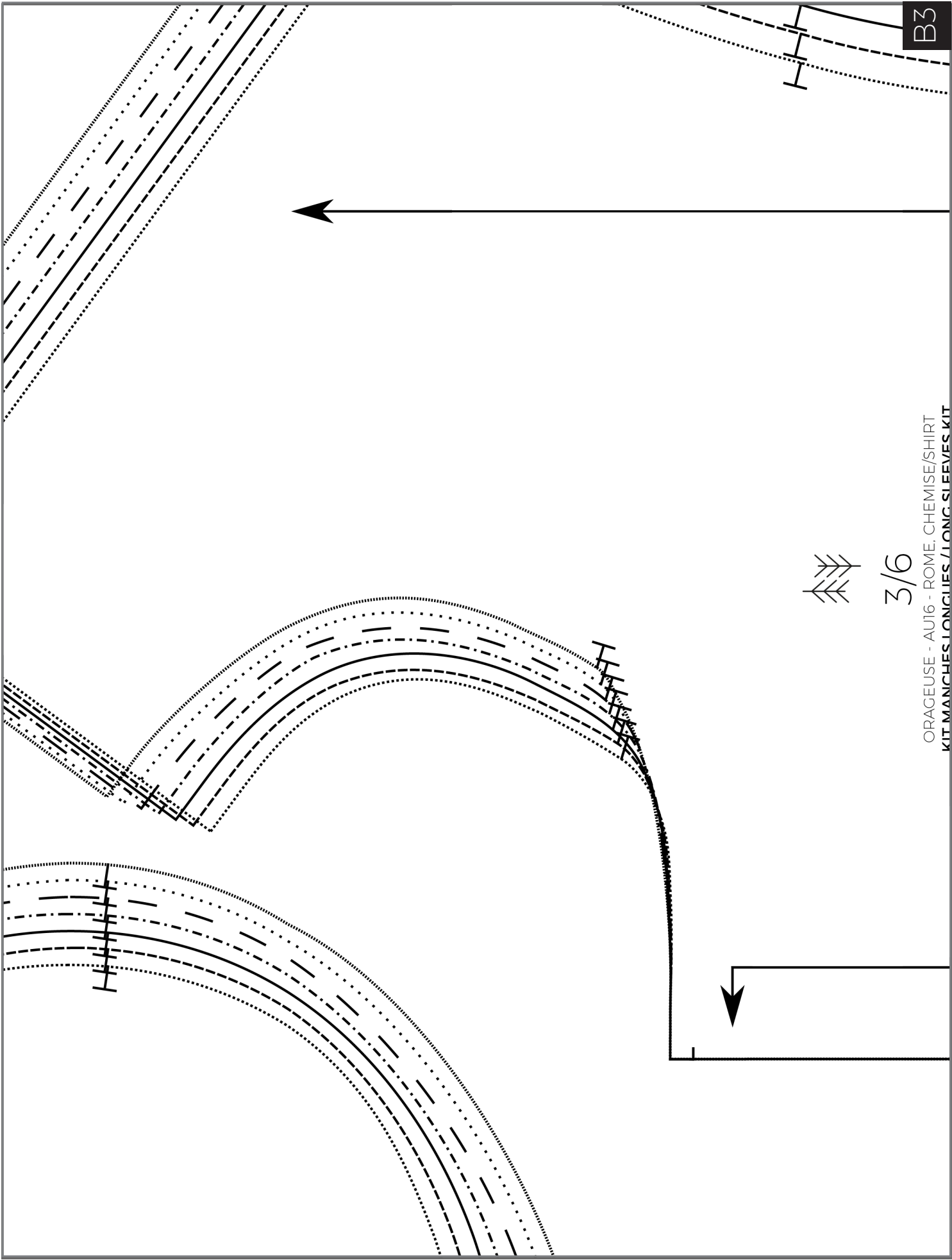
U16 - ROME, CHEMISE/SHIRT  
LONG SLEEVES KIT  
HEIGHT / SLEEVE

tissue/fabric x2

sizes FR34 à 46

tout modèle déposés/registered design and trademark



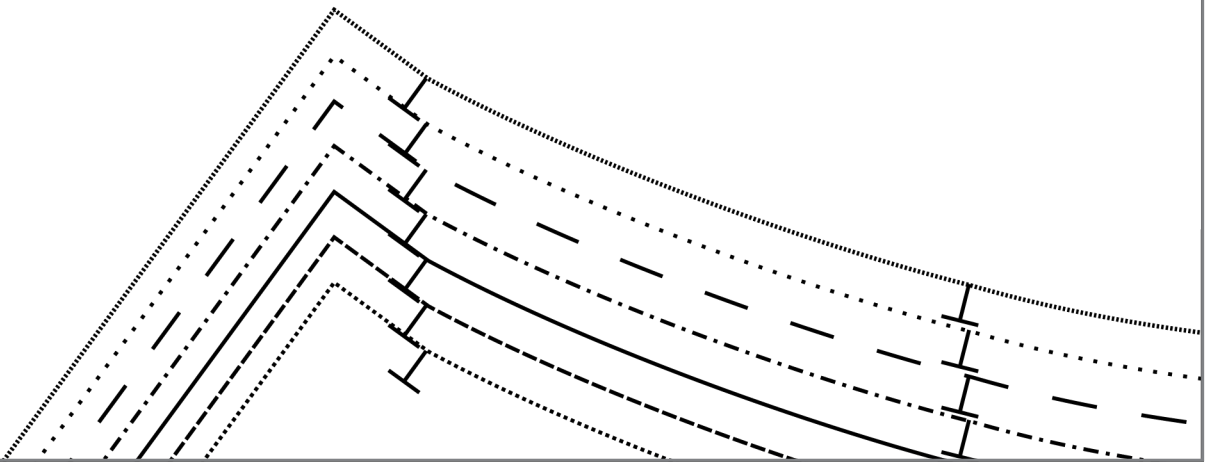


ORAGEUSE - AU16 - ROME, CHEMISE/SHIRT  
KIT MANCHES LONGUES / LONG SLEEVES KIT

3/6



B3





5/6

ORAGEUSE - AU16 - ROME, CHEMISE/SHIRT

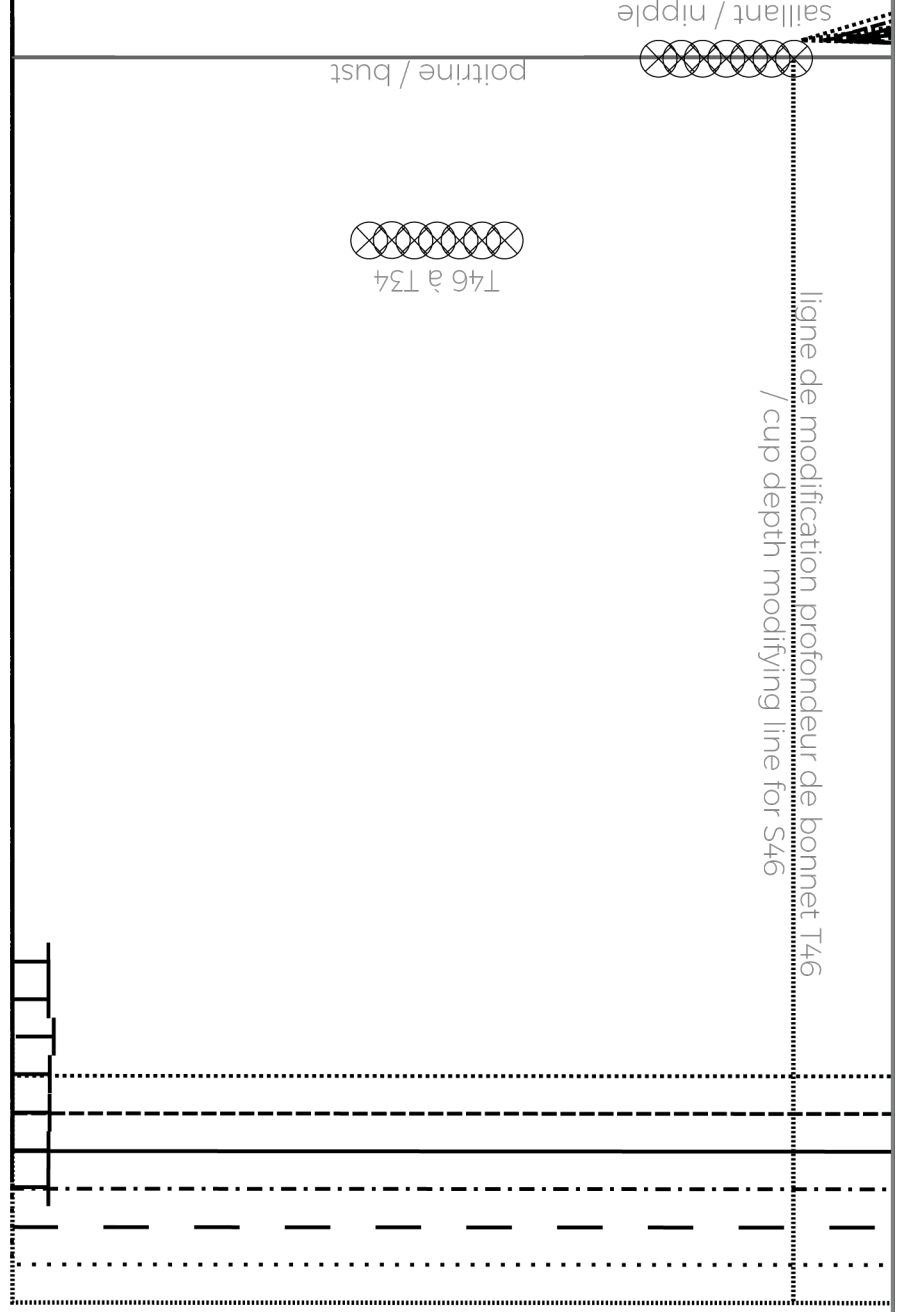
**KIT MANCHES LONGUES / LONG SLEEVES KIT**

**PATTE DE FENTE / SLIT TAB**

tissu/fabric x2

tailles/sizes FR34 à 46

© 2016 ORAGEUSE - marque et modèle déposés/registered design and trademark



C1

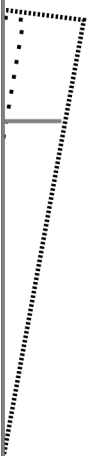
hips  
shirt and tunic versions)

ed design and trademark

WISE/SHIRT  
SLEEVES KIT  
DNT

it modifying line number 1

T46 à T34

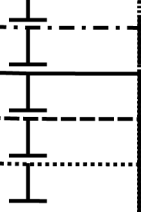
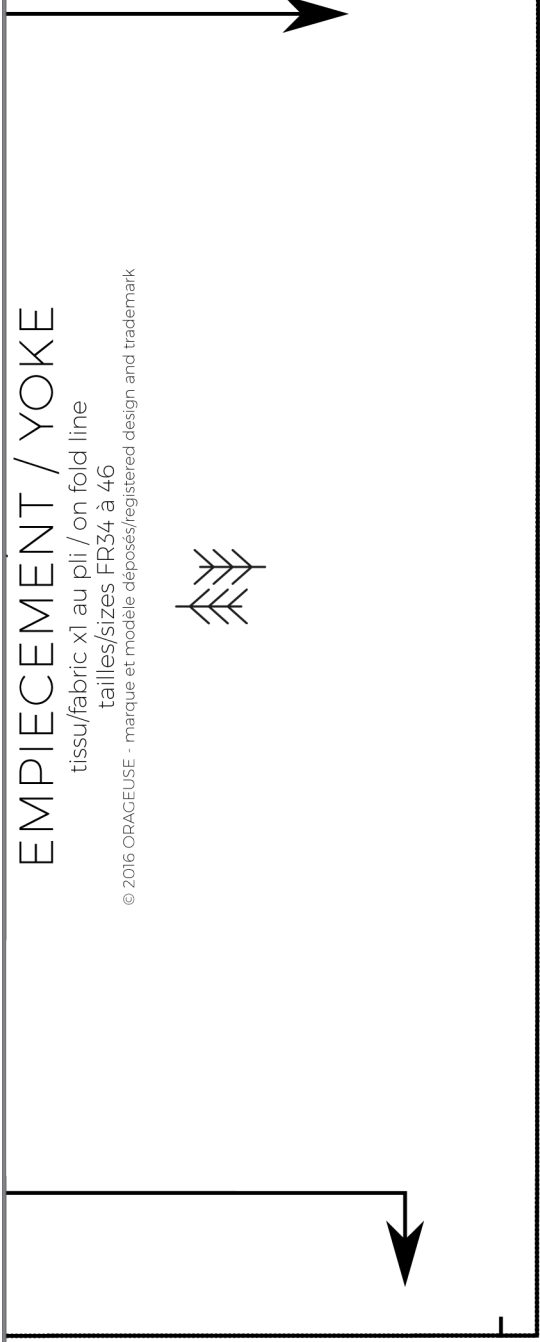


# EMPIECEMENT / YOKE

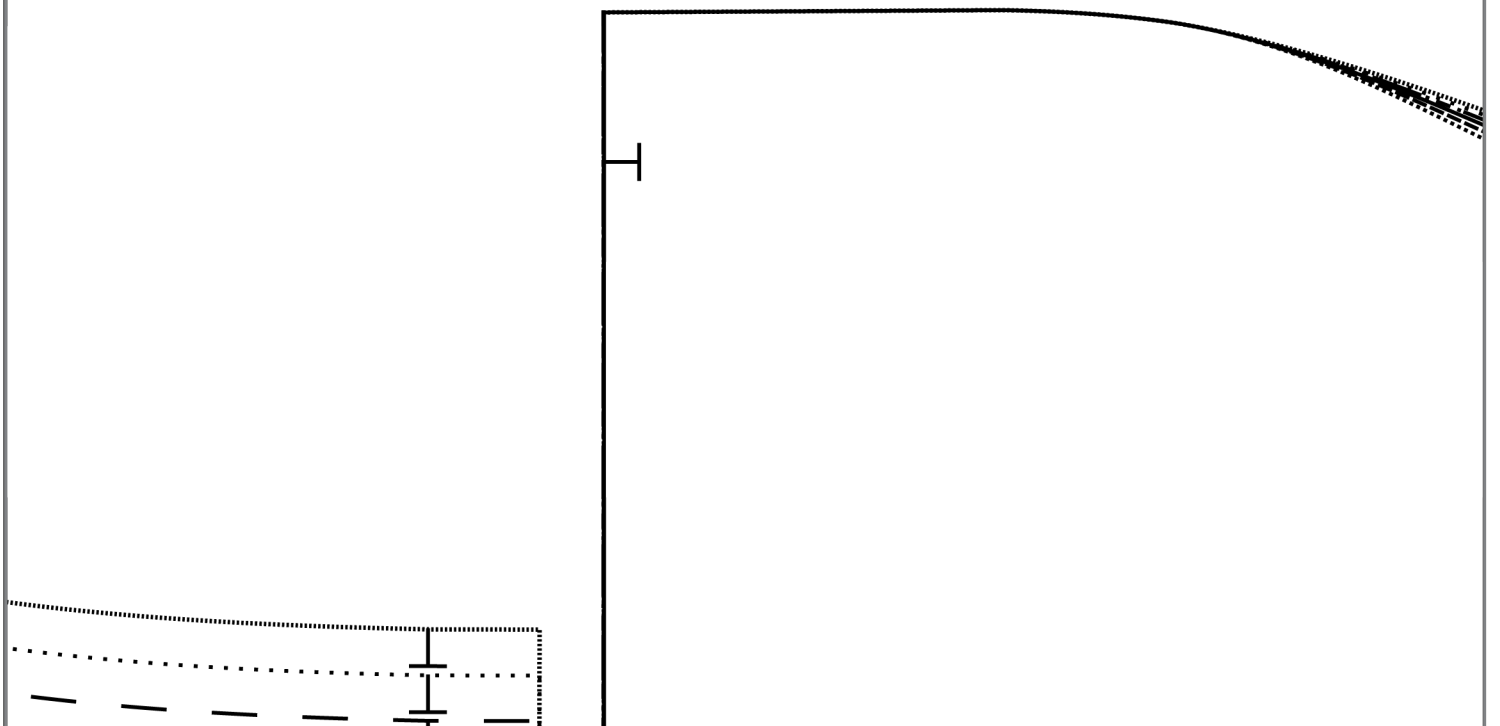
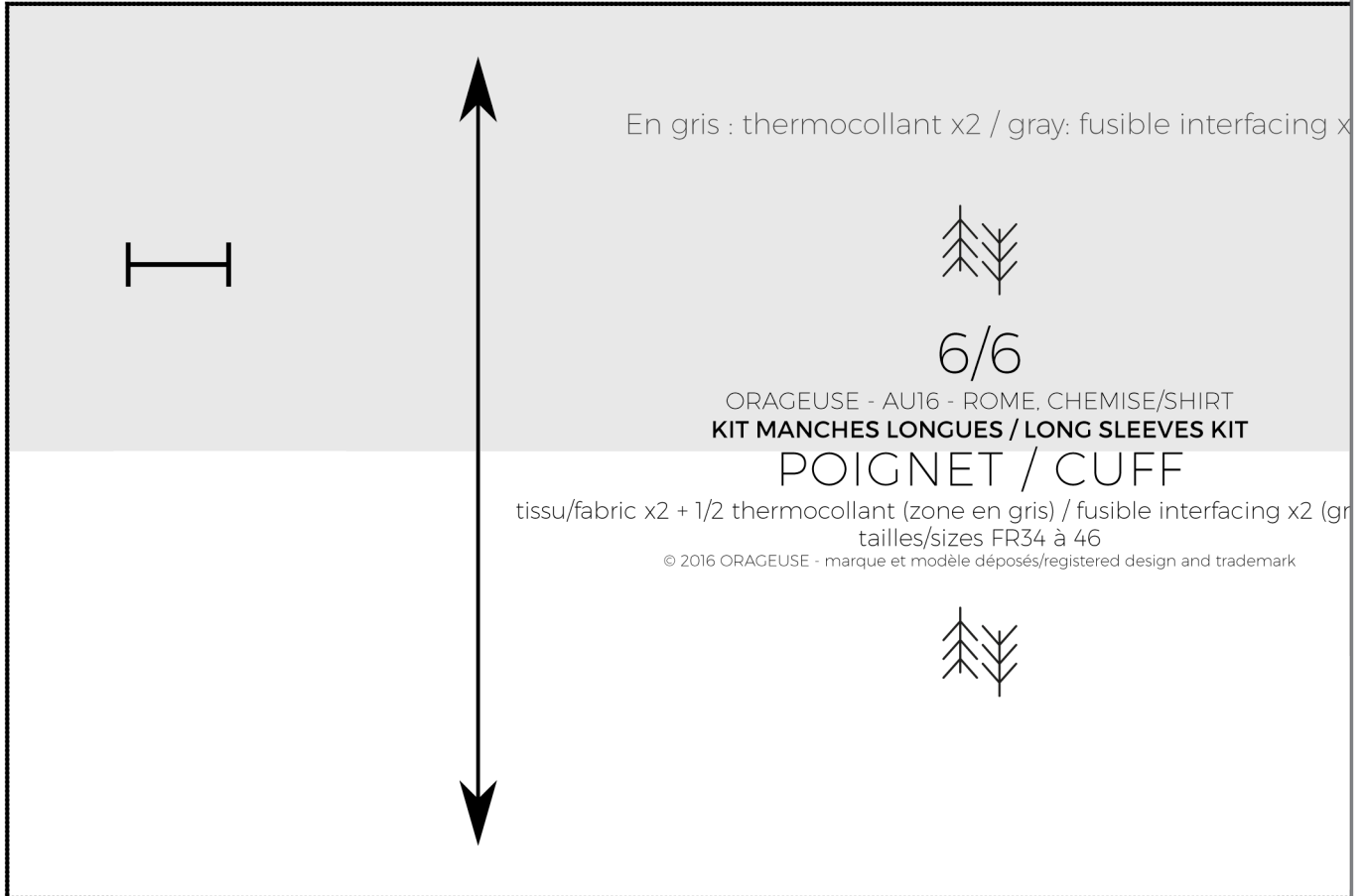
tissu/fabric x1 au pli / on fold line

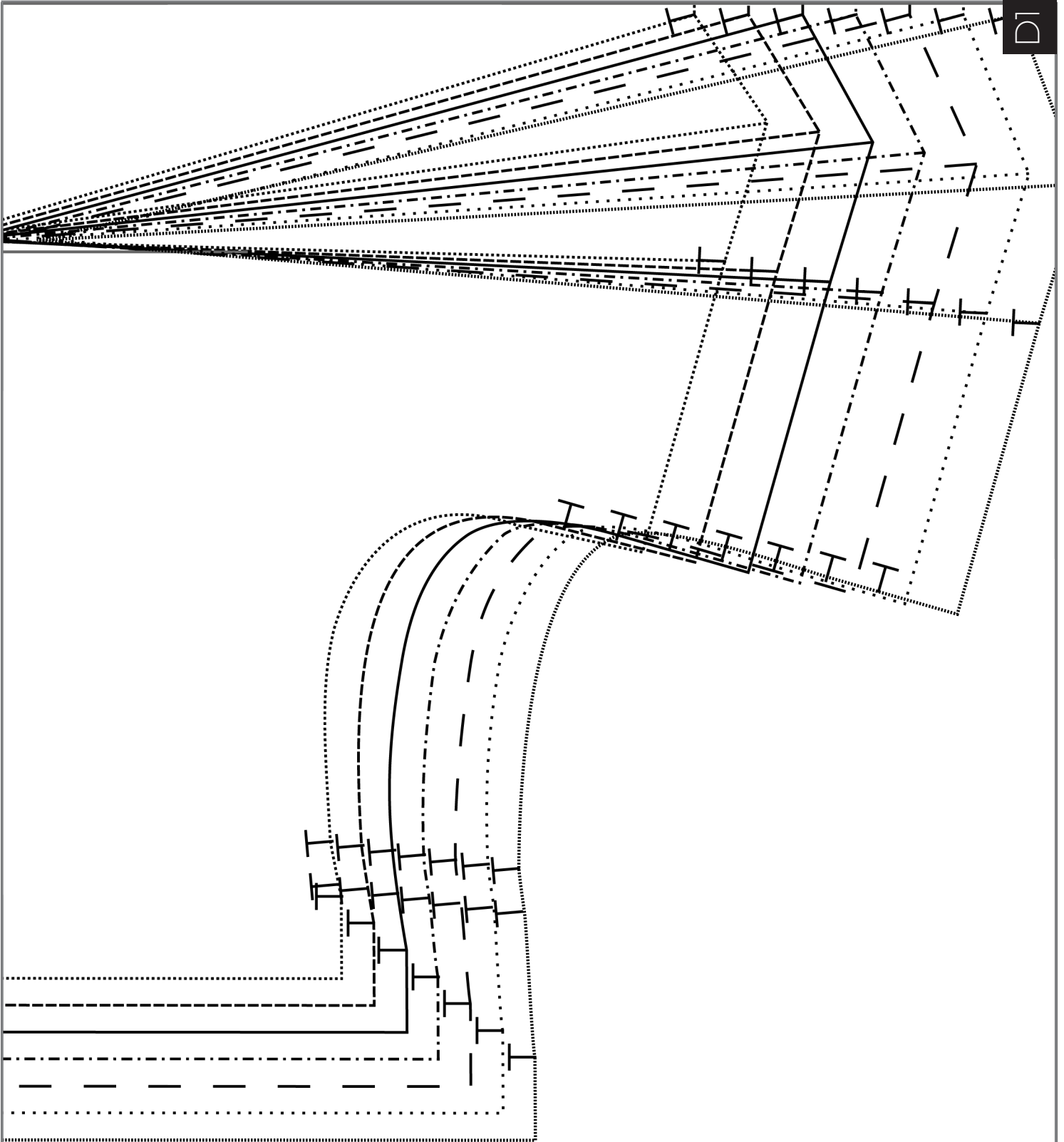
tailles/sizes FR34 à 46

© 2016 ORAGEUSE - marque et modèle déposés/registered design and trademark



and height modifying line number 2





hanches / upper  
Hauteur fente version chemise et tunique / side slit height (for s

taille / waist

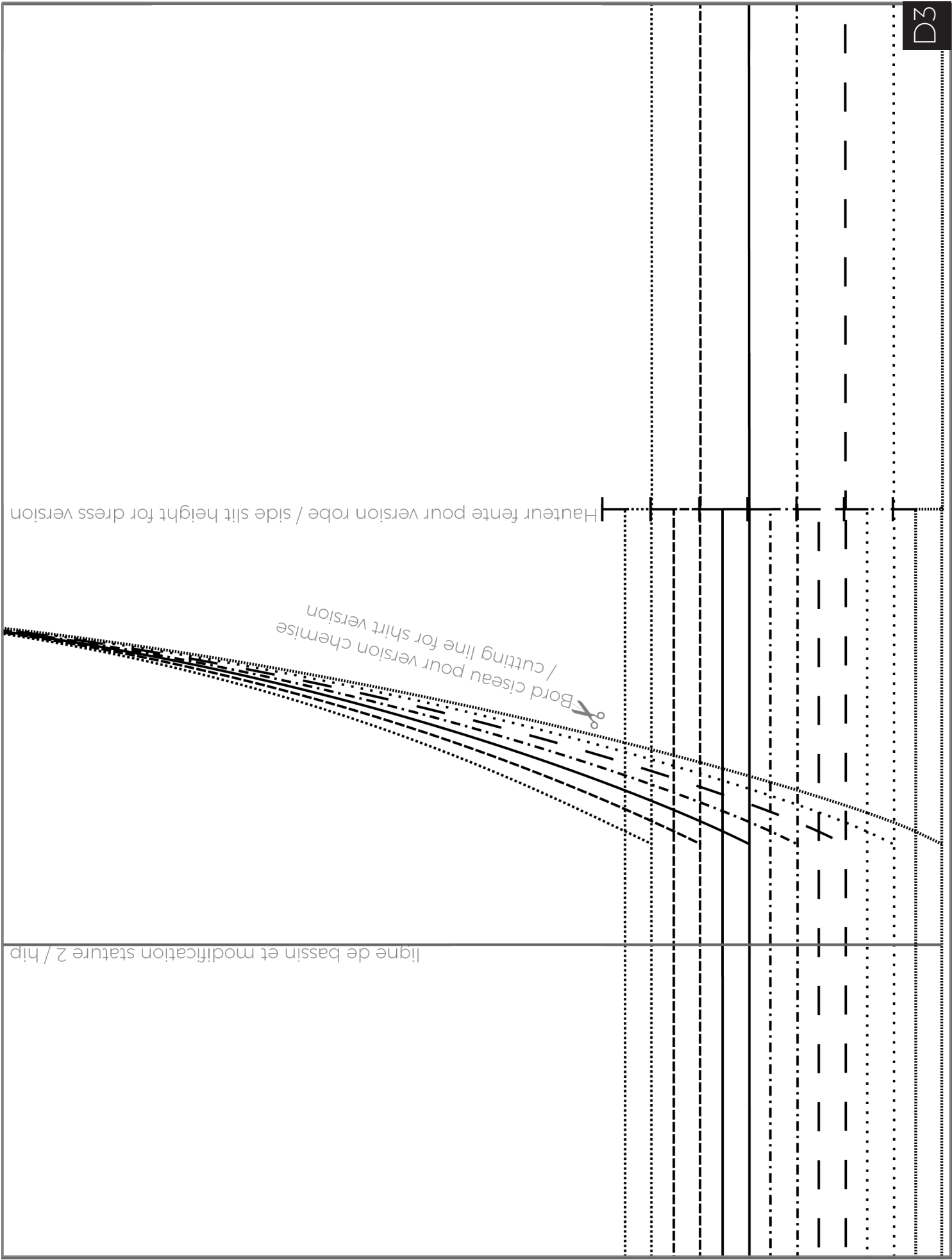


ORAGEUSE - AUI6 - ROME, CHE  
**KIT MANCHES LONGUES / LONG**  
**DEVANT / FRONT**  
tissu/fabric x2  
tailles/sizes FR34 à 46  
© 2016 ORAGEUSE - marque et modèle déposés/registré

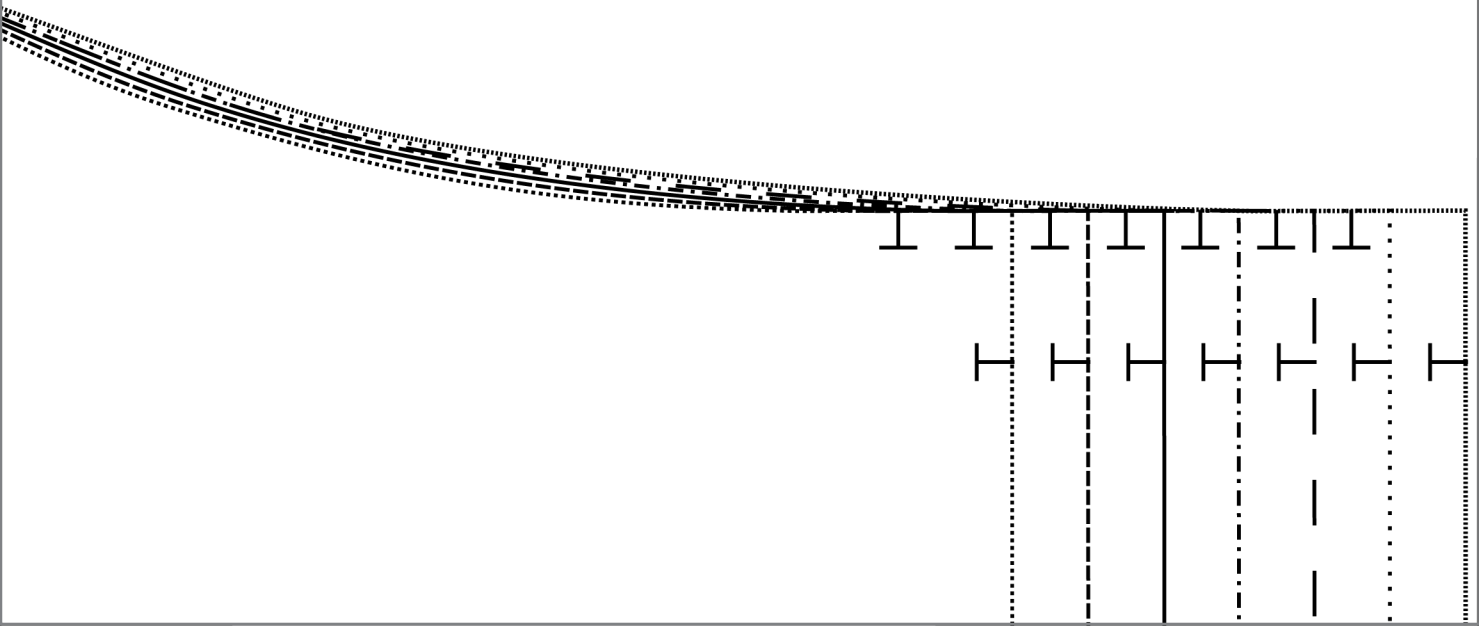
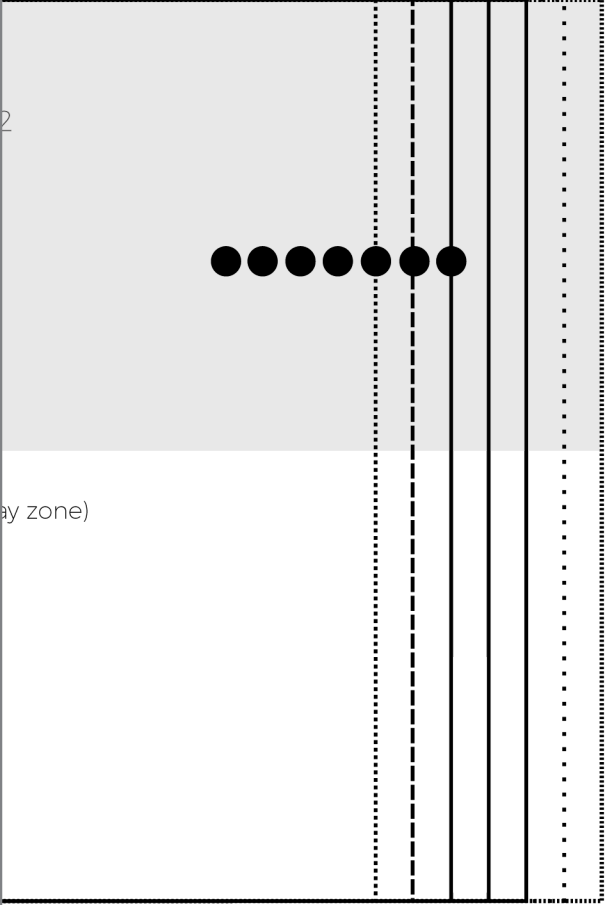
1/6



ligne de modification stature 1/ height

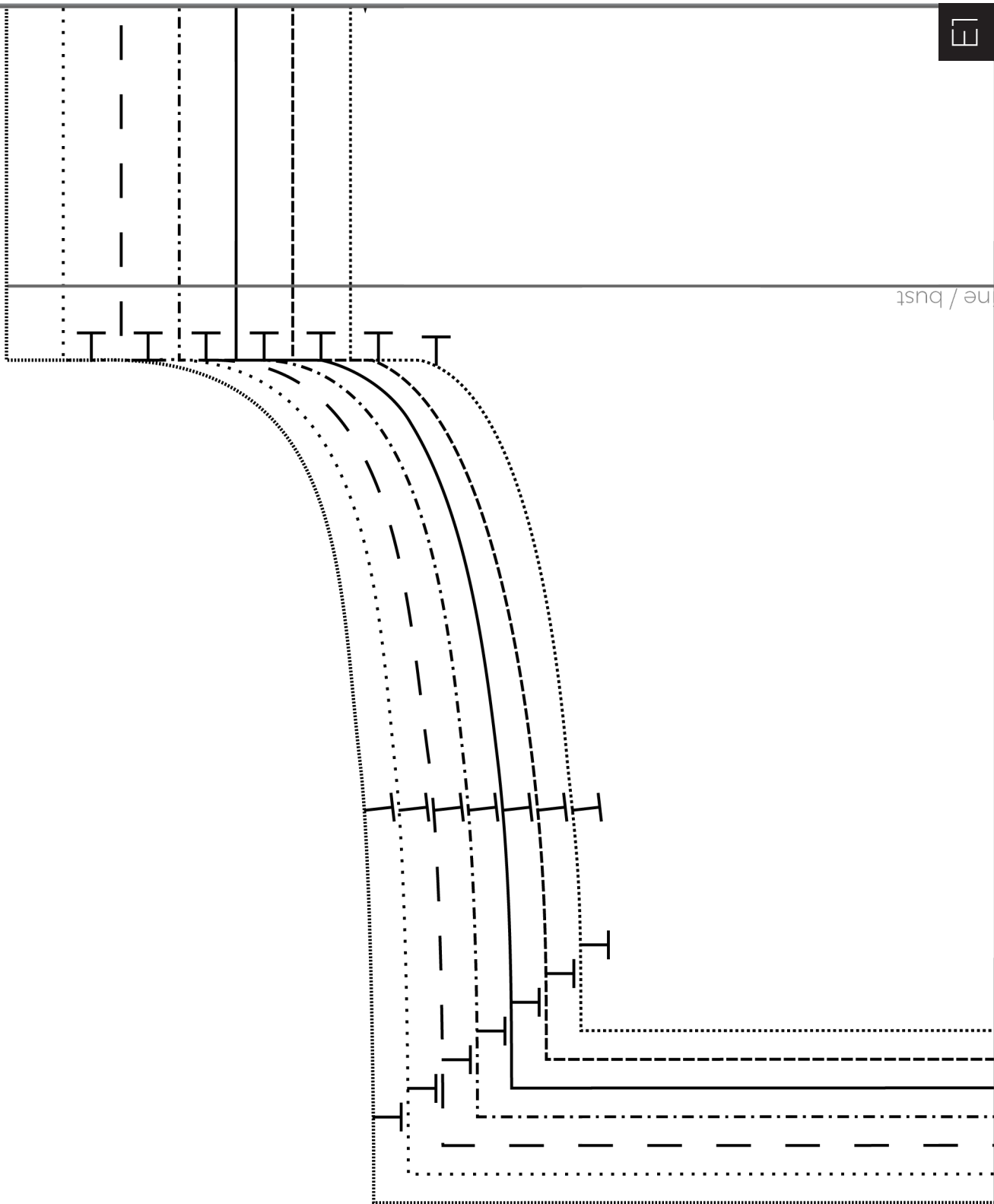


ligne de bassin et modification stature 2 / hip





ne / bust



/ upper hips

Hauteur fente version chemise et tunique /  
side slit height (for shirt and tunic versions)

e / waist



au pli / on fold line  
Zes FR34 à 46  
ble déposés/registered design and trademark

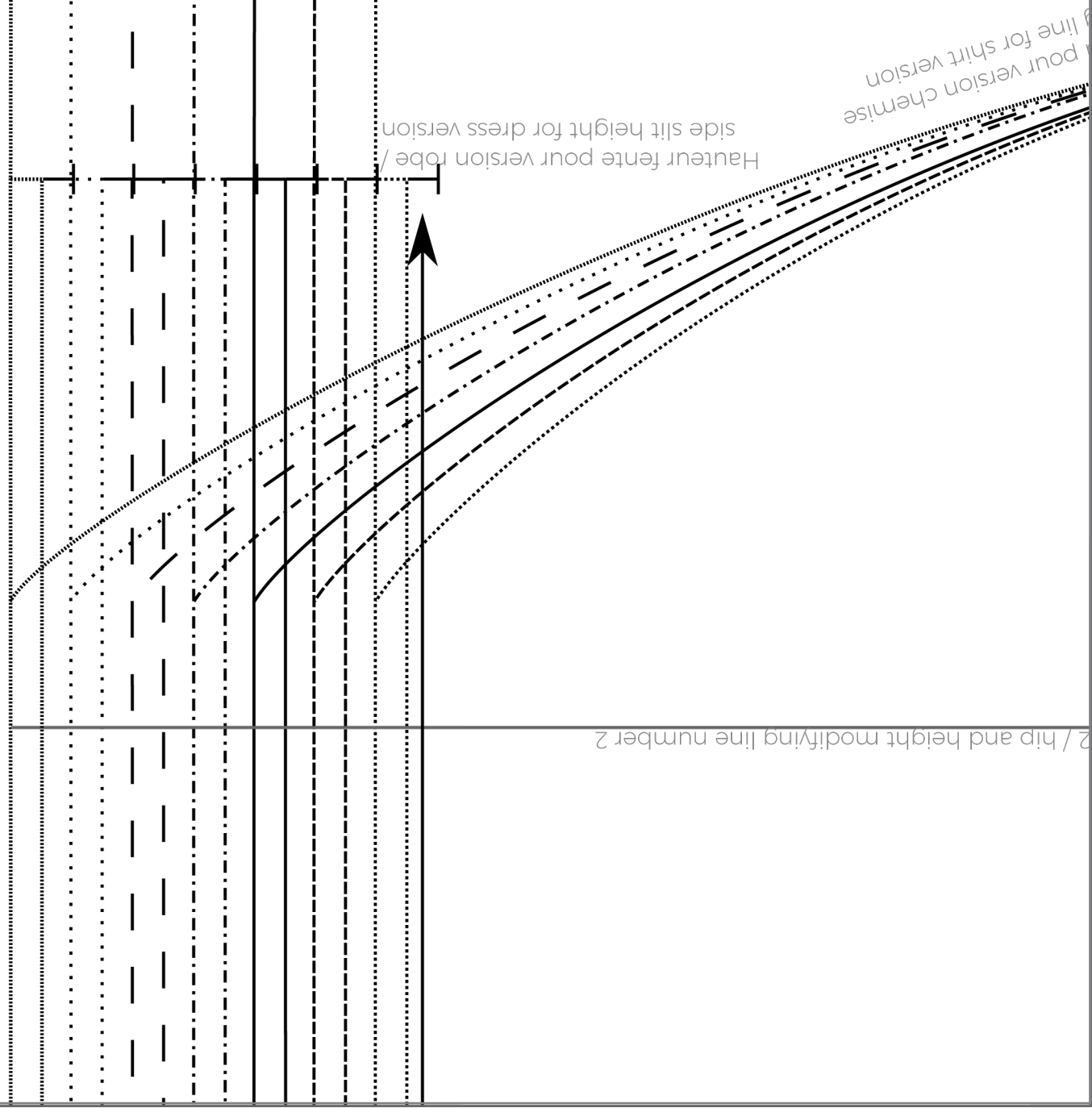
ROME. CHEMISE/SHIRT  
SLEEVES / LONG SLEEVES KIT  
BACK (FLAT PLEAT)

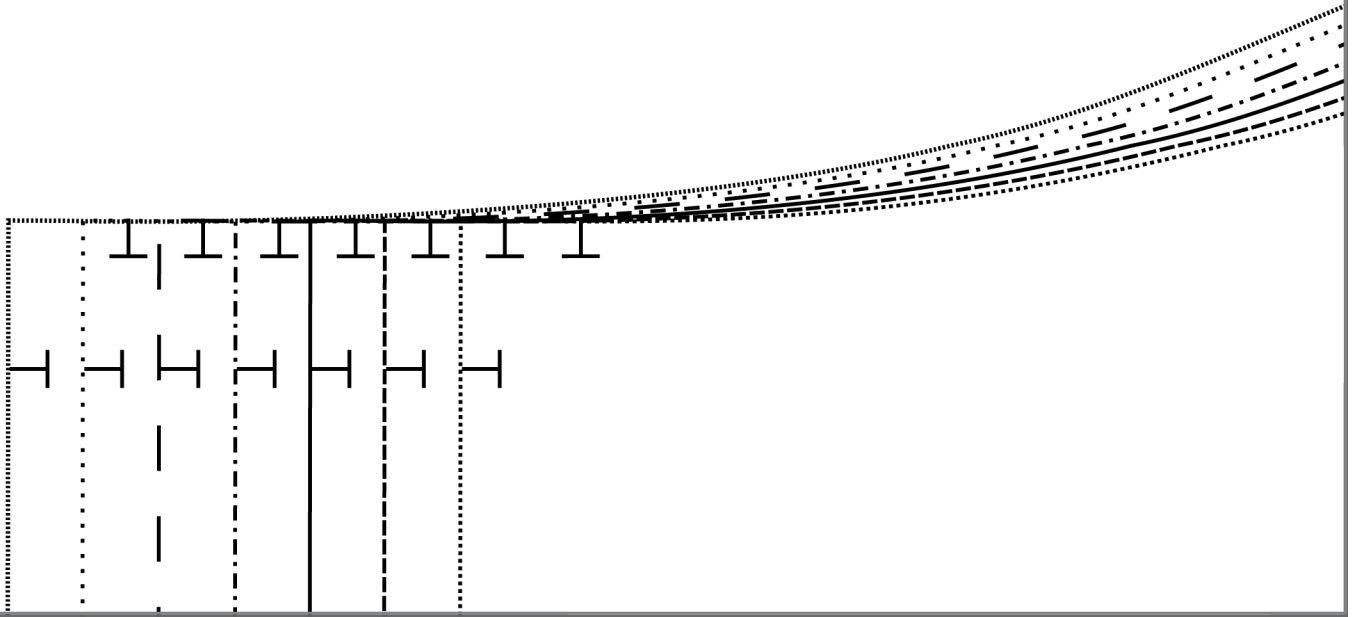
A/6



l/ height modifying line number 1










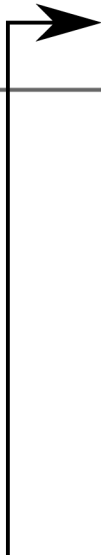
point

	hanches
	taille
	ligne de modification stature

2  
ORAGEUSE - AUI6  
KIT MANCHES LONG  
DOS (PLI PLAT) /  
tissu/fabric XI  
tailles/s  
© 2016 ORAGEUSE - marque et mod



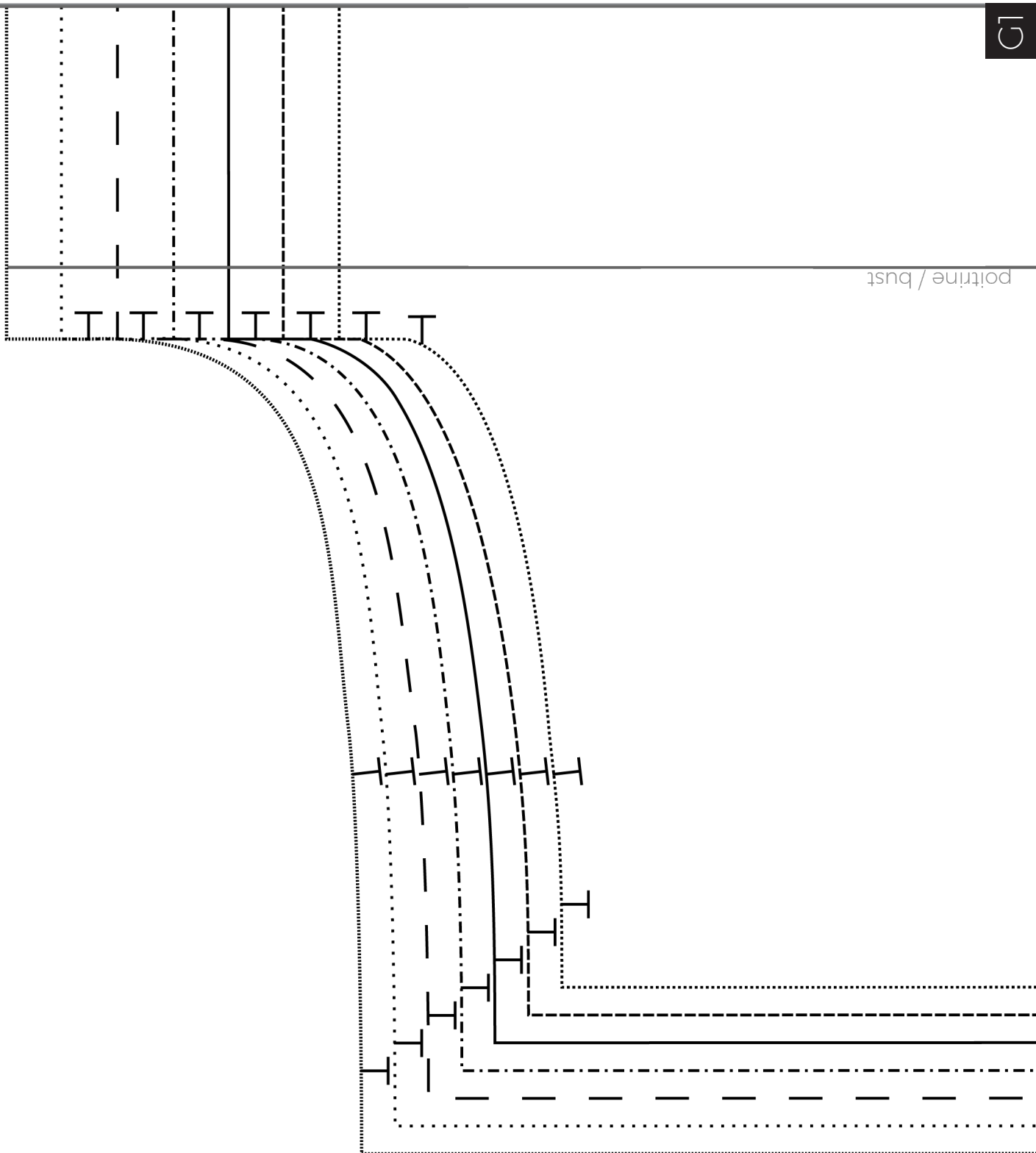
ligne de bassin et modification stature







poitrine / bust



anches / upper hips

Hauteur fente version chemise et tunique /  
side slit height (for shirt and tunic versions)

taille / waist



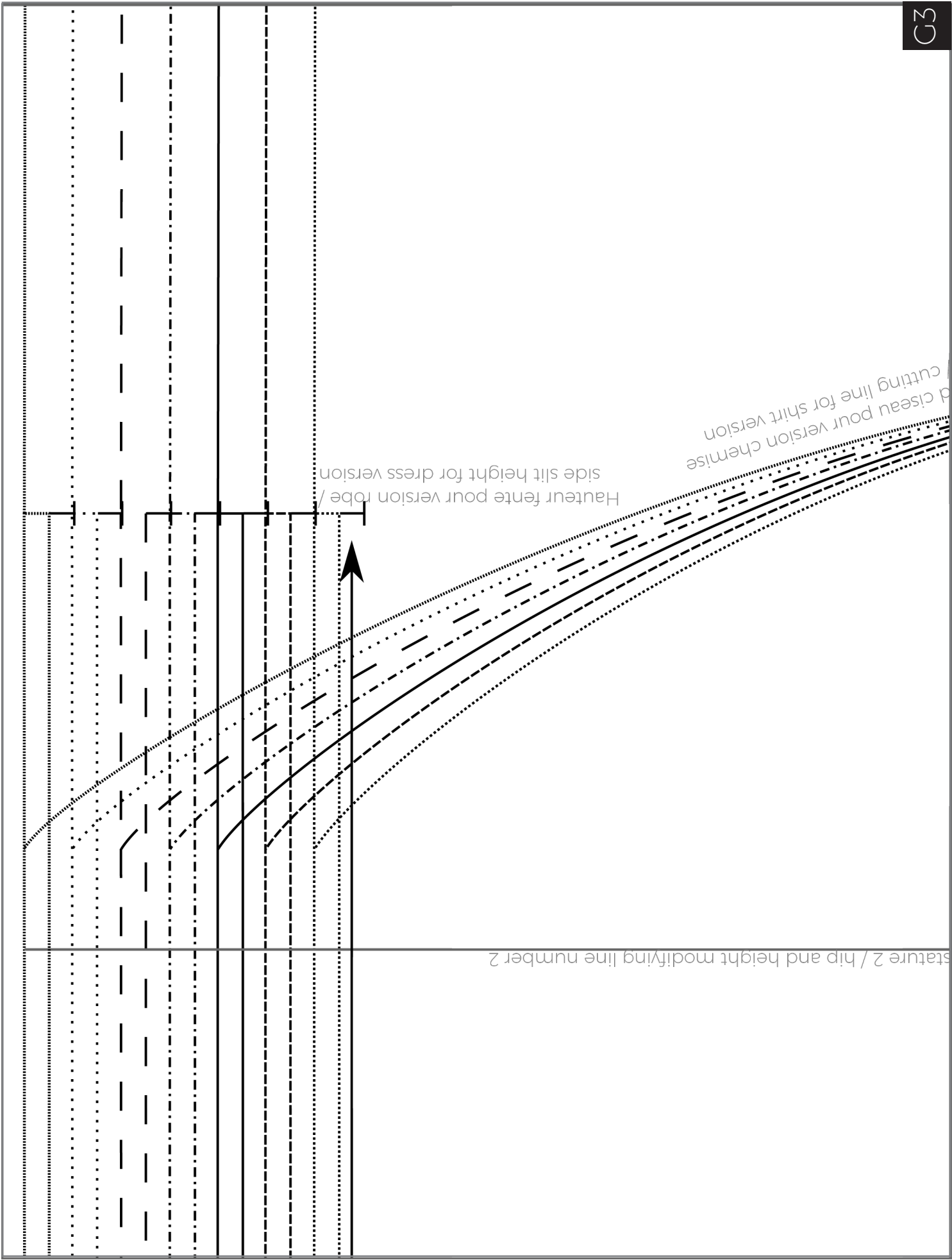
E - AUI6 - ROME, CHEMISE/SHIRT  
ES) / BACK (HORIZONTAL TUCKS)  
LES LONGUES / LONG SLEEVES KIT  
/fabric x1 au pli / on fold line  
tailles/sizes FR34 à 46  
marque et modèle déposés/registered design and trademark

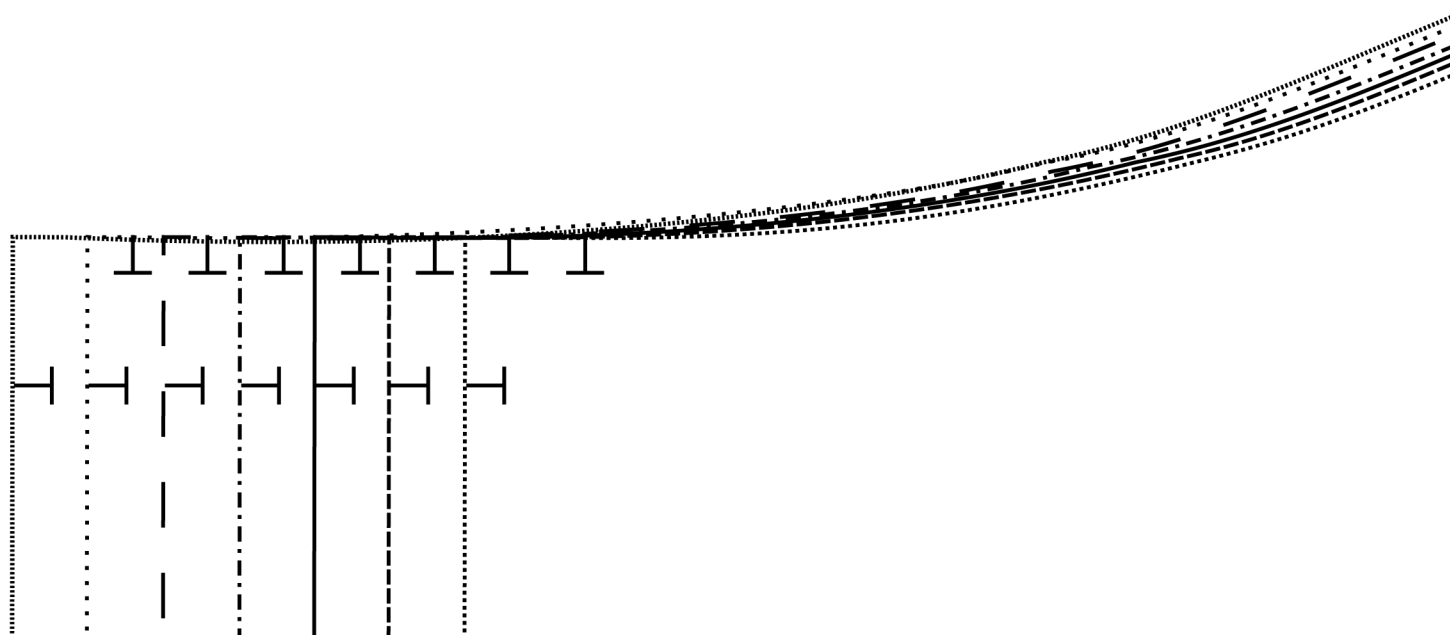
2B/6



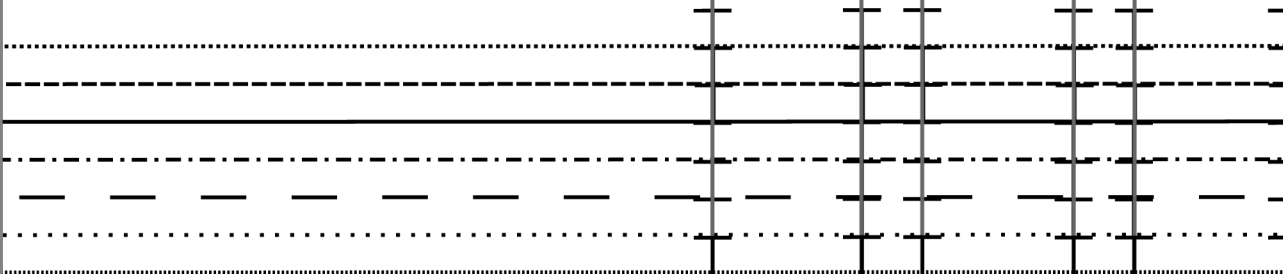
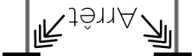
statue 1/ height modifying line number 1







de la couture  
du pli / end of the  
tucks seam



Arret

de la couture  
du pli / end of the  
tuck's seam

ligne de modification

© 2016 ORAGUSE - m



ligne de bassin et modification



